

Summary

Production Name	Plk Rabbit Polyclonal Antibody
Description	Rabbit Polyclonal Antibody
Host	Rabbit
Application	WB,IHC-P,IF-P,IF-F,ICC/IF,ELISA
Reactivity	Human,Mouse,Rat

Performance

Conjugation	Unconjugated
Modification	Unmodified
Isotype	IgG
Clonality	Polyclonal
Form	Liquid
Storage	Store at 4°C short term. Aliquot and store at -20°C long term. Avoid freeze/thaw cycles.
Buffer	Liquid in PBS containing 50% glycerol, 0.5% BSA and 0.02% New type preservative N.
Purification	Affinity purification

Immunogen

Gene Name	PLK1
Alternative Names	PLK1; PLK; Serine/threonine-protein kinase PLK1; Polo-like kinase 1; PLK-1; Serine/threonine-protein kinase 13; STPK13
Gene ID	5347.0
SwissProt ID	P53350.The antiserum was produced against synthesized peptide derived from human PLK1. AA range:176-225

Application

Dilution Ratio	WB 1:500-1:2000, IHC-P 1:100-1:300, IF-P/IF-F/ICC/IF 1:200-1:1000, ELISA 1:20000.Not yet tested in other applications.
Molecular Weight	70kDa

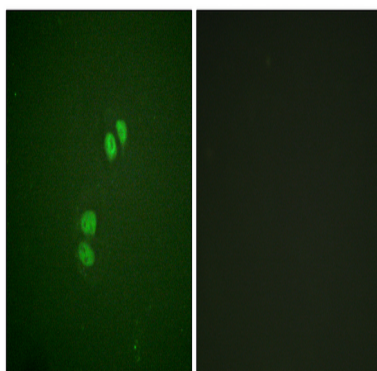
Background

The Ser/Thr protein kinase encoded by this gene belongs to the CDC5/Polo subfamily. It is highly expressed during mitosis and elevated levels are found in many different types of cancer. Depletion of this protein in cancer cells dramatically inhibited cell proliferation and induced apoptosis; hence, it is a target for cancer therapy. [provided by RefSeq, Sep 2015], catalytic activity: ATP + a protein = ADP + a phosphoprotein., developmental stage: Accumulates to a maximum during the G2 and M phases, declines to a nearly undetectable level following mitosis and throughout G1 phase, and then begins to accumulate again during S phase., enzyme regulation: Activated by serine and threonine phosphorylation., function: Serine/threonine-protein kinase that performs several important functions throughout M phase of the cell cycle, including the regulation of centrosome maturation and spindle assembly, the removal of cohesins from chromosome arms, the inactivation of APC/C inhibitors, and the regulation of mitotic exit and cytokinesis., induction: By growth-stimulating agents., PTM: Autophosphorylation and phosphorylation of Ser-137 are not significant events during activation of PLK1 in M phase., PTM: Catalytic activity is enhanced by phosphorylation of Thr-210 and/or Ser-137., similarity: Belongs to the protein kinase superfamily., similarity: Belongs to the protein kinase superfamily. Ser/Thr protein kinase family. CDC5/Polo subfamily., similarity: Contains 1 protein kinase domain., similarity: Contains 2 POLO box domains., subunit: Interacts with CEP170 and EVI5. Interacts and phosphorylates ERCC6L. Interacts with FAM29A., tissue specificity: Placenta and colon.,

Research Area

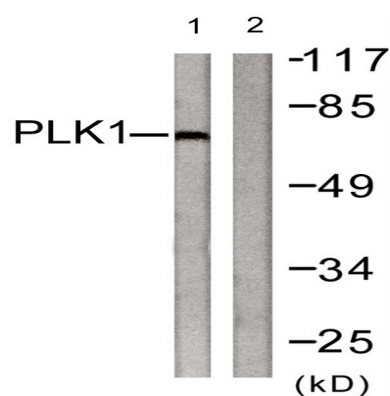
Cell_Cycle_G1S; Cell_Cycle_G2M_DNA; Oocyte meiosis; Progesterone-mediated oocyte maturation;

Image Data



Immunofluorescence analysis of A549 cells, using PLK1 Antibody. The picture on the right is blocked with the synthesized peptide.

Product Name: Plk Rabbit Polyclonal Antibody
Catalog #: APRab16273



Western blot analysis of lysates from LOVO cells, treated with PMA 125ng/ml 30 ' , using PLK1 Antibody. The lane on the right is blocked with the synthesized peptide.

Note

For research use only.