

**Product Name: PLD4 Rabbit Polyclonal Antibody**  
**Catalog #: APRab16259**



## Summary

<b>Production Name</b>	PLD4 Rabbit Polyclonal Antibody
<b>Description</b>	Rabbit Polyclonal Antibody
<b>Host</b>	Rabbit
<b>Application</b>	WB,IHC-P
<b>Reactivity</b>	Human,Mouse,Rat

## Performance

<b>Conjugation</b>	Unconjugated
<b>Modification</b>	Unmodified
<b>Isotype</b>	IgG
<b>Clonality</b>	Polyclonal
<b>Form</b>	Liquid
<b>Storage</b>	Store at 4°C short term. Aliquot and store at -20°C long term. Avoid freeze/thaw cycles.
<b>Buffer</b>	Liquid in PBS containing 50% glycerol, 0.5% BSA and 0.02% New type preservative N.
<b>Purification</b>	Affinity purification

## Immunogen

<b>Gene Name</b>	PLD4 C14orf175 UNQ2488/PRO5775
<b>Alternative Names</b>	Phospholipase D4 (PLD 4) (EC 3.1.4.4) (Choline phosphatase 4) (Phosphatidylcholine-hydrolyzing phospholipase D4)
<b>Gene ID</b>	122618.0
<b>SwissProt ID</b>	Q96BZ4. Synthesized peptide derived from human PLD4 Polyclonal

## Application

<b>Dilution Ratio</b>	WB 1:500-2000, IHC-P 1:50-300
<b>Molecular Weight</b>	55kDa

## Background

catalytic activity:A phosphatidylcholine + H(2)O = choline + a phosphatidate.,similarity:Belongs to the phospholipase D

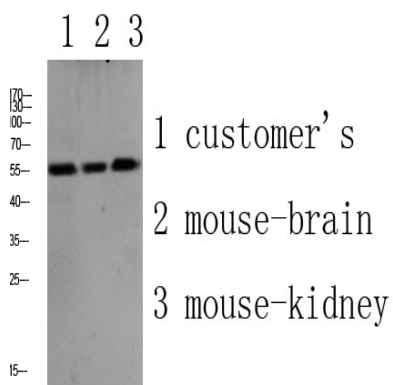
**Product Name: PLD4 Rabbit Polyclonal Antibody**  
**Catalog #: APRab16259**



family.,similarity:Contains 2 PLD phosphodiesterase domains.,catalytic activity:A phosphatidylcholine + H(2)O = choline + a phosphatidate.,similarity:Belongs to the phospholipase D family.,similarity:Contains 2 PLD phosphodiesterase domains.,

## Research Area

## Image Data



Western blot analysis of various lysate, antibody was diluted at 1000. Secondary antibody was diluted at 1:20000

## Note

For research use only.