

**Product Name: Plakophilin 4 Rabbit Polyclonal Antibody**  
**Catalog #: APRab16238**

---

## Summary

<b>Production Name</b>	Plakophilin 4 Rabbit Polyclonal Antibody
<b>Description</b>	Rabbit Polyclonal Antibody
<b>Host</b>	Rabbit
<b>Application</b>	WB,IHC-P,IF-P,IF-F,ICC/IF,ELISA
<b>Reactivity</b>	Human,Mouse

## Performance

<b>Conjugation</b>	Unconjugated
<b>Modification</b>	Unmodified
<b>Isotype</b>	IgG
<b>Clonality</b>	Polyclonal
<b>Form</b>	Liquid
<b>Storage</b>	Store at 4°C short term. Aliquot and store at -20°C long term. Avoid freeze/thaw cycles.
<b>Buffer</b>	Liquid in PBS containing 50% glycerol, 0.5% BSA and 0.02% New type preservative N.
<b>Purification</b>	Affinity purification

## Immunogen

<b>Gene Name</b>	PKP4
<b>Alternative Names</b>	PKP4; Plakophilin-4; p0071
<b>Gene ID</b>	604276.0
<b>SwissProt ID</b>	Q99569.The antiserum was produced against synthesized peptide derived from human PKP4. AA range:185-234

## Application

<b>Dilution Ratio</b>	WB 1:500-1:2000, IHC-P 1:100-1:300, ELISA 1:5000, IF-P/IF-F/ICC/IF 1:50-200
<b>Molecular Weight</b>	130kDa

## Background

---

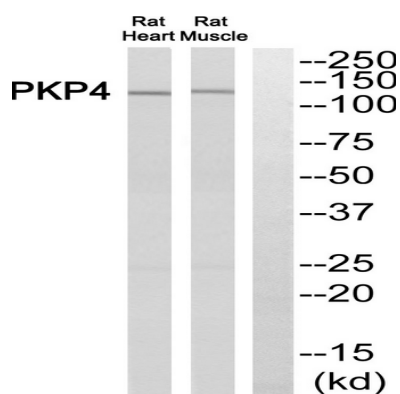
**Product Name: Plakophilin 4 Rabbit Polyclonal Antibody**  
**Catalog #: APRab16238**



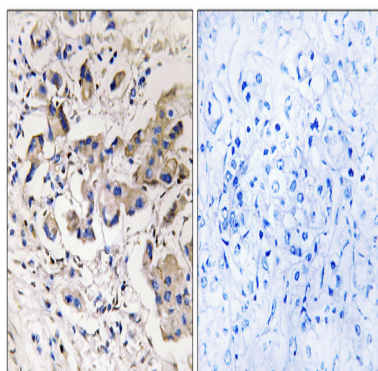
Armadillo-like proteins are characterized by a series of armadillo repeats, first defined in the *Drosophila* 'armadillo' gene product, that are typically 42 to 45 amino acids in length. These proteins can be divided into subfamilies based on their number of repeats, their overall sequence similarity, and the dispersion of the repeats throughout their sequences. Members of the p120(ctn)/plakophilin subfamily of Armadillo-like proteins, including CTNND1, CTNND2, PKP1, PKP2, PKP4, and ARVCF. PKP4 may be a component of desmosomal plaque and other adhesion plaques and is thought to be involved in regulating junctional plaque organization and cadherin function. Multiple transcript variants encoding different isoforms have been found for this gene. [provided by RefSeq, Feb 2015],function:May play a role in junctional plaques.,PTM:Phosphorylated upon DNA damage, probably by ATM or ATR.,similarity:Belongs to the beta-catenin family.,similarity:Contains 9 ARM repeats.,subcellular location:Colocalized with desmoplakin at desmosomal junctional plaques in cultured epithelial cells.,subunit:Interacts with PDZD2.,

## Research Area

## Image Data

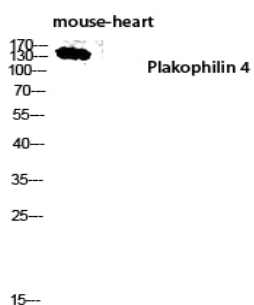


Western blot analysis of PKP4 Antibody. The lane on the right is blocked with the PKP4 peptide.



Immunohistochemistry analysis of paraffin-embedded human breast carcinoma, using PKP4 Antibody. The lane on the right is blocked with the PKP4 peptide.

**Product Name: Plakophilin 4 Rabbit Polyclonal Antibody**  
**Catalog #: APRab16238**



Western blot analysis of mouse-heart lysis using Plakophilin 4 antibody. Antibody was diluted at 1:2000

## Note

For research use only.