

## Summary

<b>Production Name</b>	PKI $\beta$ Rabbit Polyclonal Antibody
<b>Description</b>	Rabbit Polyclonal Antibody
<b>Host</b>	Rabbit
<b>Application</b>	WB,IHC-P,IF-P,IF-F,ICC/IF,ELISA
<b>Reactivity</b>	Human,Mouse,Rat

## Performance

<b>Conjugation</b>	Unconjugated
<b>Modification</b>	Unmodified
<b>Isotype</b>	IgG
<b>Clonality</b>	Polyclonal
<b>Form</b>	Liquid
<b>Storage</b>	Store at 4°C short term. Aliquot and store at -20°C long term. Avoid freeze/thaw cycles.
<b>Buffer</b>	Liquid in PBS containing 50% glycerol, 0.5% BSA and 0.02% New type preservative N.
<b>Purification</b>	Affinity purification

## Immunogen

<b>Gene Name</b>	PKIB
<b>Alternative Names</b>	PKIB; PRKACN2; cAMP-dependent protein kinase inhibitor beta; PKI-beta
<b>Gene ID</b>	5570.0
<b>SwissProt ID</b>	Q9C010. The antiserum was produced against synthesized peptide derived from human IPKB. AA range:29-78

## Application

<b>Dilution Ratio</b>	IHC-P 1:100-1:300, IF-P/IF-F/ICC/IF 1:200-1:1000, ELISA 1:5000, WB 1:500-2000
<b>Molecular Weight</b>	

## Background

protein kinase (cAMP-dependent, catalytic) inhibitor beta(PKIB) Homo sapiens This gene encodes a member of the

**Product Name: PKI  $\beta$  Rabbit Polyclonal Antibody**  
**Catalog #: APRab16217**

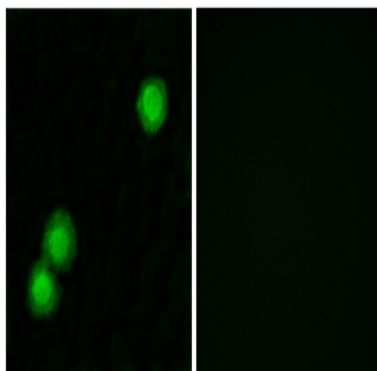
---



cAMP-dependent protein kinase inhibitor family. The encoded protein may play a role in the protein kinase A (PKA) pathway by interacting with the catalytic subunit of PKA, and overexpression of this gene may play a role in prostate cancer. Alternatively spliced transcript variants encoding multiple isoforms have been observed for this gene. [provided by RefSeq, Jul 2012],function:Extremely potent competitive inhibitor of cAMP-dependent protein kinase activity, this protein interacts with the catalytic subunit of the enzyme after the cAMP-induced dissociation of its regulatory chains.,similarity:Belongs to the PKI family.,

## Research Area

## Image Data



Immunofluorescence analysis of MCF7 cells, using IPKB Antibody. The picture on the right is blocked with the synthesized peptide.

## Note

For research use only.