

**Product Name: PITSLRE Rabbit Polyclonal Antibody**  
**Catalog #: APRab16166**



## Summary

<b>Production Name</b>	PITSLRE Rabbit Polyclonal Antibody
<b>Description</b>	Rabbit Polyclonal Antibody
<b>Host</b>	Rabbit
<b>Application</b>	WB,IHC-P,IF-P,IF-F,ICC/IF,ELISA
<b>Reactivity</b>	Human,Mouse

## Performance

<b>Conjugation</b>	Unconjugated
<b>Modification</b>	Unmodified
<b>Isotype</b>	IgG
<b>Clonality</b>	Polyclonal
<b>Form</b>	Liquid
<b>Storage</b>	Store at 4°C short term. Aliquot and store at -20°C long term. Avoid freeze/thaw cycles.
<b>Buffer</b>	Liquid in PBS containing 50% glycerol, 0.5% BSA and 0.02% New type preservative N.
<b>Purification</b>	Affinity purification

## Immunogen

<b>Gene Name</b>	CDK11B
<b>Alternative Names</b>	CDK11B; CDC2L1; CDK11; PITSLREA; PK58; Cyclin-dependent kinase 11B; Cell division cycle 2-like protein kinase 1; CLK-1; Cell division protein kinase 11B; Galactosyltransferase-associated protein kinase p58/GTA; PITSLRE serine/threonine-prot
<b>Gene ID</b>	984.0
<b>SwissProt ID</b>	P21127.The antiserum was produced against synthesized peptide derived from human CDC2L1. AA range:10-59

## Application

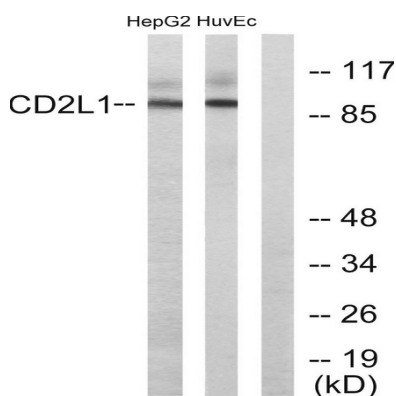
<b>Dilution Ratio</b>	WB 1:500-1:2000, IHC-P 1:100-1:300, ELISA 1:20000, IF-P/IF-F/ICC/IF 1:50-200
<b>Molecular Weight</b>	92kDa

## Background

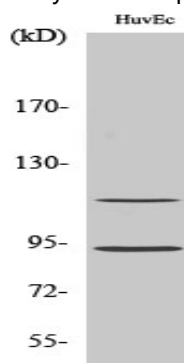
This gene encodes a member of the serine/threonine protein kinase family. Members of this kinase family are known to be essential for eukaryotic cell cycle control. Due to a segmental duplication, this gene shares very high sequence identity with a neighboring gene. These two genes are frequently deleted or altered in neuroblastoma. The protein kinase encoded by this gene can be cleaved by caspases and may play a role in cell apoptosis. Alternative splicing results in multiple transcript variants. [provided by RefSeq, Apr 2014], caution: The sequence shown here is derived from an Ensembl automatic analysis pipeline and should be considered as preliminary data.,

## Research Area

## Image Data



Western blot analysis of lysates from HUVEC and HepG2 cells, using CDC2L1 Antibody. The lane on the right is blocked with the synthesized peptide.



Western Blot analysis of various cells using PITSLRE Polyclonal Antibody

**Product Name: PITSLRE Rabbit Polyclonal Antibody**  
**Catalog #: APRab16166**

---



**Note**

For research use only.