

Product Name: pICln Rabbit Polyclonal Antibody
Catalog #: APRab16126



Summary

Production Name	pICln Rabbit Polyclonal Antibody
Description	Rabbit Polyclonal Antibody
Host	Rabbit
Application	WB,ELISA,IHC-P
Reactivity	Human,Rat,Mouse

Performance

Conjugation	Unconjugated
Modification	Unmodified
Isotype	IgG
Clonality	Polyclonal
Form	Liquid
Storage	Store at 4°C short term. Aliquot and store at -20°C long term. Avoid freeze/thaw cycles.
Buffer	Liquid in PBS containing 50% glycerol, 0.5% BSA and 0.02% New type preservative N.
Purification	Affinity purification

Immunogen

Gene Name	CLNS1A CLNS1A; CLCI; ICLN; Methylosome subunit pICln; Chloride channel; nucleotide
Alternative Names	sensitive 1A; Chloride conductance regulatory protein ICLN; I(ICln); Chloride ion current inducer protein; CLCI; Reticulocyte pICln
Gene ID	1207.0
SwissProt ID	P54105. The antiserum was produced against synthesized peptide derived from human CLNS1A. AA range:184-233

Application

Dilution Ratio	WB 1:500-2000, IHC-P 1:50-300, ELISA 2000-20000
Molecular Weight	37kDa

Product Name: pICln Rabbit Polyclonal Antibody
Catalog #: AP Rab16126

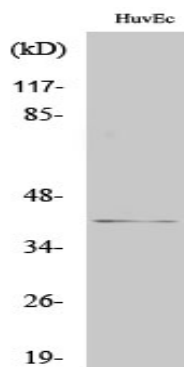


Background

This gene encodes a protein that functions in multiple regulatory pathways. The encoded protein complexes with numerous cytosolic proteins and performs diverse functions including regulation of small nuclear ribonucleoprotein biosynthesis, platelet activation and cytoskeletal organization. The protein is also found associated with the plasma membrane where it functions as a chloride current regulator. Pseudogenes of this gene are found on chromosomes 1, 4 and 6. Several transcript variants encoding different isoforms have been found for this gene. [provided by RefSeq, Jul 2015],function:The interaction with Sm proteins inhibits their assembly on U RNA and interferes with snRNP biogenesis. Inhibits the binding of survival motor neuron protein (SMN) to Sm proteins. May participate in cellular volume control by activation of a swelling-induced chloride conductance pathway.,PTM:Phosphorylated upon DNA damage, probably by ATM or ATR.,similarity:Belongs to the pICln family.,subcellular location:A small fraction is also associated with the cytoskeleton.,subunit:Homooligomer. Component of the methylosome, a 20S complex containing SKB1. Interacts with Sm proteins.,

Research Area

Image Data



Western Blot analysis of various cells using pICln Polyclonal Antibody

Note

For research use only.