

Summary

Production Name	PI-9 Rabbit Polyclonal Antibody
Description	Rabbit Polyclonal Antibody
Host	Rabbit
Application	WB,IHC-P,IF-P,IF-F,ICC/IF,ELISA
Reactivity	Human,Mouse,Rat

Performance

Conjugation	Unconjugated
Modification	Unmodified
Isotype	IgG
Clonality	Polyclonal
Form	Liquid
Storage	Store at 4°C short term. Aliquot and store at -20°C long term. Avoid freeze/thaw cycles.
Buffer	Liquid in PBS containing 50% glycerol, 0.5% BSA and 0.02% New type preservative N.
Purification	Affinity purification

Immunogen

Gene Name	SERPINB9
Alternative Names	SERPINB9; PI9; Serpin B9; Cytoplasmic antiproteinase 3; CAP-3; CAP3; Peptidase inhibitor 9; PI-9
Gene ID	5272.0
SwissProt ID	P50453.The antiserum was produced against synthesized peptide derived from human SERPINB9. AA range:241-290

Application

Dilution Ratio	WB 1:500-1:2000, IHC-P 1:100-300, ELISA 1:20000, IF-P/IF-F/ICC/IF 1:100-300, Not yet tested in other applications.
Molecular Weight	40kDa

Product Name: PI-9 Rabbit Polyclonal Antibody
Catalog #: APRab16118

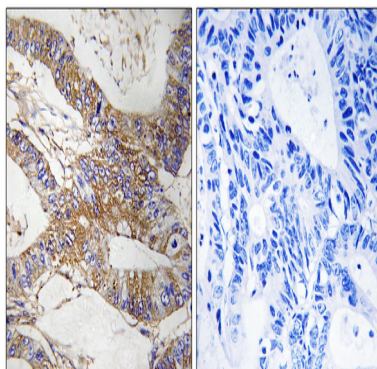


Background

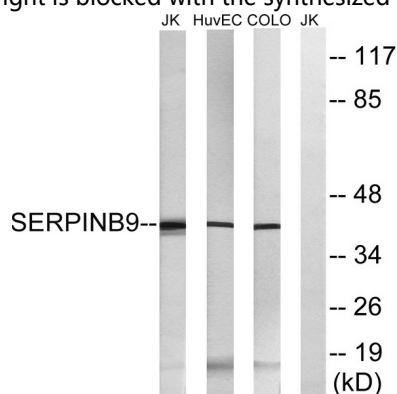
This gene encodes a member of the serine protease inhibitor family which are also known as serpins. The encoded protein belongs to a subfamily of intracellular serpins. This protein inhibits the activity of the effector molecule granzyme B. Overexpression of this protein may prevent cytotoxic T-lymphocytes from eliminating certain tumor cells. A pseudogene of this gene is found on chromosome 6. [provided by RefSeq, Mar 2012],function:Granzyme B inhibitor.,similarity:Belongs to the serpin family.,similarity:Belongs to the serpin family. Ov-serpin subfamily.,

Research Area

Image Data

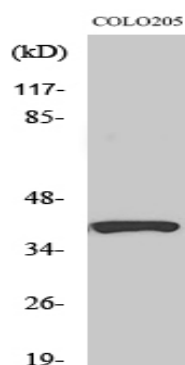


Immunohistochemistry analysis of paraffin-embedded human colon carcinoma tissue, using SERPINB9 Antibody. The picture on the right is blocked with the synthesized peptide.



Western blot analysis of lysates from COLO, HUVEC, and Jurkat cells, using SERPINB9 Antibody. The lane on the right is blocked with the synthesized peptide.

Product Name: PI-9 Rabbit Polyclonal Antibody
Catalog #: APRab16118



Western Blot analysis of various cells using PI-9 Polyclonal Antibody diluted at 1: 1000

Note

For research use only.