

## Summary

<b>Production Name</b>	Phocein Rabbit Polyclonal Antibody
<b>Description</b>	Rabbit Polyclonal Antibody
<b>Host</b>	Rabbit
<b>Application</b>	WB,IHC-P,IF-P,IF-F,ICC/IF,ELISA
<b>Reactivity</b>	Human,Mouse,Rat

## Performance

<b>Conjugation</b>	Unconjugated
<b>Modification</b>	Unmodified
<b>Isotype</b>	IgG
<b>Clonality</b>	Polyclonal
<b>Form</b>	Liquid
<b>Storage</b>	Store at 4°C short term. Aliquot and store at -20°C long term. Avoid freeze/thaw cycles.
<b>Buffer</b>	Liquid in PBS containing 50% glycerol, 0.5% BSA and 0.02% New type preservative N.
<b>Purification</b>	Affinity purification

## Immunogen

<b>Gene Name</b>	MOB4 MOB4; MOB3; MOBKL3; PHOCN; PREI3; CGI-95; MOB-like protein phocein; 2C4D; Class
<b>Alternative Names</b>	II mMOB1; Mob1 homolog 3; Mob3; Mps one binder kinase activator-like 3; Preimplantation protein 3
<b>Gene ID</b>	25843.0
<b>SwissProt ID</b>	Q9Y3A3.The antiserum was produced against synthesized peptide derived from human MOBL3. AA range:1-50

## Application

<b>Dilution Ratio</b>	WB 1:500-1:2000, IHC-P 1:100-1:300, IF-P/IF-F/ICC/IF 1:200-1:1000, ELISA 1:20000.Not yet tested in other applications.
-----------------------	---

**Product Name: Phocein Rabbit Polyclonal Antibody**  
**Catalog #: APRab16082**



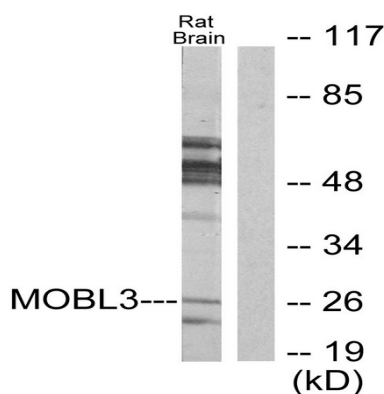
**Molecular Weight** 26kDa

## Background

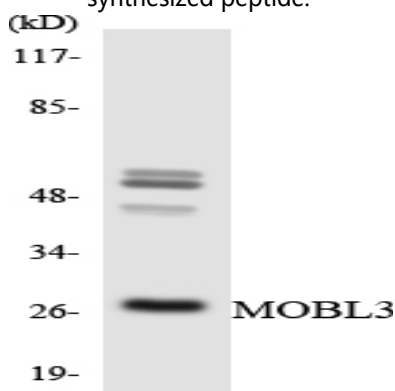
This gene was identified based on its similarity with the mouse counterpart. Studies of the mouse counterpart suggest that the expression of this gene may be regulated during oocyte maturation and preimplantation following zygotic gene activation. Alternatively spliced transcript variants encoding distinct isoforms have been observed. Naturally occurring read-through transcription occurs between this locus and the neighboring locus HSPE1.[provided by RefSeq, Feb 2011],PTM:Phosphorylated on serine residues.,similarity:Belongs to the MOB1/phocein family.,subcellular location:In a perinuclear punctate pattern. Associated with membranes and the Golgi stacks.,subunit:Binds STRN4 (By similarity). Binds STRN and STRN3. Part of a ternary complex containing MOBKL3, STRN and/or STRN3 and PPA2.,

## Research Area

## Image Data



Western blot analysis of lysates from rat brain cells, using MOB3 Antibody. The lane on the right is blocked with the synthesized peptide.



Western blot analysis of the lysates from HT-29 cells using MOB3 antibody.

**Product Name: Phocein Rabbit Polyclonal Antibody**  
**Catalog #: APRab16082**

---



**Note**

For research use only.