

**Product Name: PHF1 Rabbit Polyclonal Antibody**  
**Catalog #: APRab16062**



## Summary

<b>Production Name</b>	PHF1 Rabbit Polyclonal Antibody
<b>Description</b>	Rabbit Polyclonal Antibody
<b>Host</b>	Rabbit
<b>Application</b>	WB,IHC-P,IF-P,IF-F,ICC/IF,ELISA
<b>Reactivity</b>	Human,Mouse,Rat

## Performance

<b>Conjugation</b>	Unconjugated
<b>Modification</b>	Unmodified
<b>Isotype</b>	IgG
<b>Clonality</b>	Polyclonal
<b>Form</b>	Liquid
<b>Storage</b>	Store at 4°C short term. Aliquot and store at -20°C long term. Avoid freeze/thaw cycles.
<b>Buffer</b>	Liquid in PBS containing 50% glycerol, 0.5% BSA and 0.02% New type preservative N.
<b>Purification</b>	Affinity purification

## Immunogen

<b>Gene Name</b>	PHF1
<b>Alternative Names</b>	PHF1; PCL1; PHD finger protein 1; Protein PHF1; Polycomb-like protein 1; hPCI1
<b>Gene ID</b>	5252.0
<b>SwissProt ID</b>	O43189.The antiserum was produced against synthesized peptide derived from human PHF1. AA range:345-394

## Application

<b>Dilution Ratio</b>	WB 1:500-1:2000, IHC-P 1:100-1:300, ELISA 1:10000, IF-P/IF-F/ICC/IF 1:50-200
<b>Molecular Weight</b>	62kDa

## Background

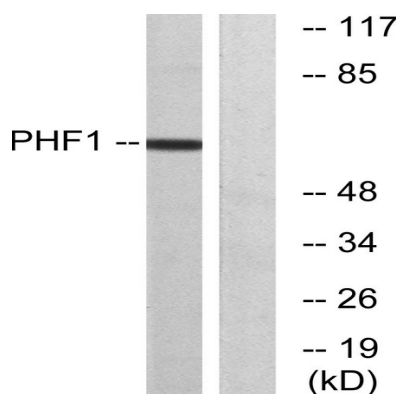
**Product Name: PHF1 Rabbit Polyclonal Antibody**  
**Catalog #: AP Rab16062**



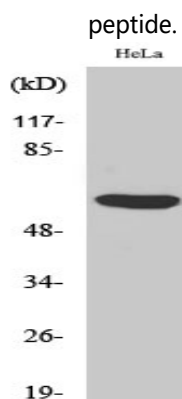
This gene encodes a Polycomb group protein. The protein is a component of a histone H3 lysine-27 (H3K27)-specific methyltransferase complex, and functions in transcriptional repression of homeotic genes. The protein is also recruited to double-strand breaks, and reduced protein levels results in X-ray sensitivity and increased homologous recombination. Multiple transcript variants encoding different isoforms have been found for this gene. [provided by RefSeq, May 2009],function:Transcriptional repressor. May promote methylation of histone H3 on 'Lys-27' by the PRC2/EED-EZH2 complex.,similarity:Contains 2 PHD-type zinc fingers.,subcellular location:Localizes specifically to the promoters of numerous target genes.,subunit:Interacts with CHMP1 (By similarity). Interacts with the PRC2 complex.,tissue specificity:Highest levels in heart, skeletal muscle, and pancreas, lower levels in brain, placenta, lung, liver and kidney.,

## Research Area

## Image Data



Western blot analysis of lysates from HeLa cells, using PHF1 Antibody. The lane on the right is blocked with the synthesized peptide.



Western Blot analysis of various cells using PHF1 Polyclonal Antibody cells nucleus extracted by Minute TM Cytoplasmic and Nuclear Fractionation kit (SC-003, Inventbiotech, MN, USA) .

**Product Name: PHF1 Rabbit Polyclonal Antibody**  
**Catalog #: APRab16062**

---



**Note**

For research use only.