

**Product Name: PHAPI2 Rabbit Polyclonal Antibody**  
**Catalog #: AP Rab16055**



## Summary

<b>Production Name</b>	PHAPI2 Rabbit Polyclonal Antibody
<b>Description</b>	Rabbit Polyclonal Antibody
<b>Host</b>	Rabbit
<b>Application</b>	WB,ELISA,IHC-P
<b>Reactivity</b>	Human,Mouse,Rat

## Performance

<b>Conjugation</b>	Unconjugated
<b>Modification</b>	Unmodified
<b>Isotype</b>	IgG
<b>Clonality</b>	Polyclonal
<b>Form</b>	Liquid
<b>Storage</b>	Store at 4°C short term. Aliquot and store at -20°C long term. Avoid freeze/thaw cycles.
<b>Buffer</b>	Liquid in PBS containing 50% glycerol, 0.5% BSA and 0.02% New type preservative N.
<b>Purification</b>	Affinity purification

## Immunogen

<b>Gene Name</b>	ANP32B ANP32B; APRIL; PHAPI2; Acidic leucine-rich nuclear phosphoprotein 32 family member B; Acidic protein rich in leucines; Putative HLA-DR-associated protein I-2; PHAPI2; Silver-stainable protein SSP29
<b>Alternative Names</b>	
<b>Gene ID</b>	10541.0
<b>SwissProt ID</b>	Q92688.The antiserum was produced against synthesized peptide derived from human ANP32B. AA range:1-50

## Application

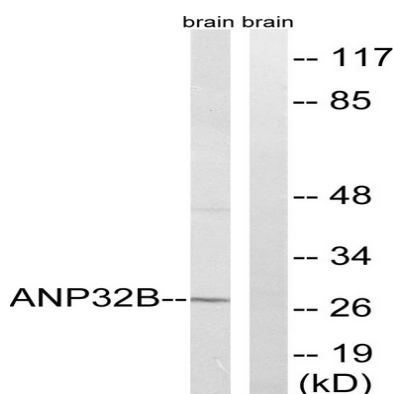
<b>Dilution Ratio</b>	WB 1:500-2000, IHC-P 1:50-300, ELISA 2000-20000
<b>Molecular Weight</b>	29kDa

## Background

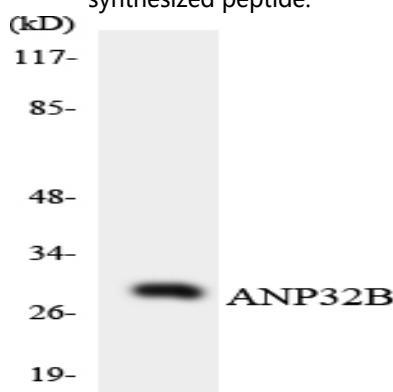
function: Multifunctional protein working as a cell cycle progression factor as well as a cell survival factor. Required for the progression from the G1 to the S phase. Anti-apoptotic protein which functions as a caspase-3 inhibitor. Has no phosphatase 2A (PP2A) inhibitor activity., similarity: Belongs to the ANP32 family., similarity: Contains 4 LRR (leucine-rich) repeats., subcellular location: Accumulates in the nuclei at the S phase., tissue specificity: Expressed in heart, lung, pancreas, prostate and in spleen, thymus and placenta., function: Multifunctional protein working as a cell cycle progression factor as well as a cell survival factor. Required for the progression from the G1 to the S phase. Anti-apoptotic protein which functions as a caspase-3 inhibitor. Has no phosphatase 2A (PP2A) inhibitor activity., similarity: Belongs to the ANP32 family., similarity: Contains 4 LRR (leucine-rich) repeats., subcellular location: Accumulates in the nuclei at the S phase., tissue specificity: Expressed in heart, lung, pancreas, prostate and in spleen, thymus and placenta.,

## Research Area

## Image Data



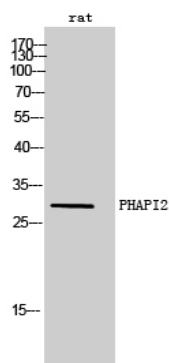
Western blot analysis of lysates from rat brain cells, using ANP32B Antibody. The lane on the right is blocked with the synthesized peptide.



Western blot analysis of the lysates from HeLa cells using ANP32B antibody.

**Product Name: PHAPI2 Rabbit Polyclonal Antibody**  
**Catalog #: APRab16055**

---



Western Blot analysis of rat cells using PHAPI2 Polyclonal Antibody cells nucleus extracted by Minute TM Cytoplasmic and Nuclear Fractionation kit (SC-003, Invent biotech, MN, USA) .

### **Note**

For research use only.