

## Summary

<b>Production Name</b>	PFAAP5 Rabbit Polyclonal Antibody
<b>Description</b>	Rabbit Polyclonal Antibody
<b>Host</b>	Rabbit
<b>Application</b>	WB,ELISA,IHC-P
<b>Reactivity</b>	Human,Mouse

## Performance

<b>Conjugation</b>	Unconjugated
<b>Modification</b>	Unmodified
<b>Isotype</b>	IgG
<b>Clonality</b>	Polyclonal
<b>Form</b>	Liquid
<b>Storage</b>	Store at 4°C short term. Aliquot and store at -20°C long term. Avoid freeze/thaw cycles.
<b>Buffer</b>	Liquid in PBS containing 50% glycerol, 0.5% BSA and 0.02% New type preservative N.
<b>Purification</b>	Affinity purification

## Immunogen

<b>Gene Name</b>	N4BP2L2
<b>Alternative Names</b>	N4BP2L2; CG005; PFAAP5; NEDD4-binding protein 2-like 2; Phosphonoformate immuno-associated protein 5
<b>Gene ID</b>	10443.0
<b>SwissProt ID</b>	Q92802.The antiserum was produced against synthesized peptide derived from human N4BP2L2. AA range:358-407

## Application

<b>Dilution Ratio</b>	WB 1:500-2000, IHC-P 1:50-300, ELISA 2000-20000
<b>Molecular Weight</b>	67kDa

**Product Name: PFAAP5 Rabbit Polyclonal Antibody**  
**Catalog #: APRab16009**

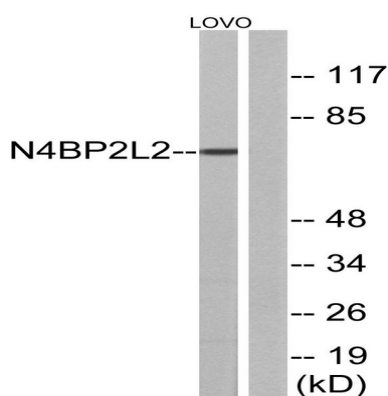


## Background

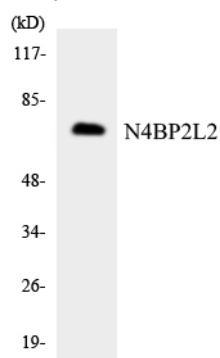
PTM:Phosphorylated upon DNA damage, probably by ATM or ATR.,PTM:Phosphorylated upon DNA damage, probably by ATM or ATR.,

## Research Area

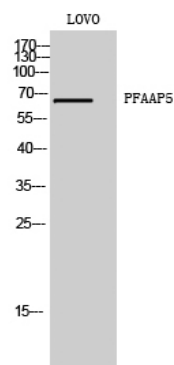
## Image Data



Western blot analysis of lysates from LOVO cells, using N4BP2L2 Antibody. The lane on the right is blocked with the synthesized peptide.



Western blot analysis of the lysates from K562 cells using N4BP2L2 antibody.



**Product Name: PFAAP5 Rabbit Polyclonal Antibody**  
**Catalog #: APRab16009**



---

Western Blot analysis of LOVO cells using PFAAP5 Polyclonal Antibody

**Note**

For research use only.