

**Product Name: Peropsin Rabbit Polyclonal Antibody**  
**Catalog #: APRab15979**



## Summary

<b>Production Name</b>	Peropsin Rabbit Polyclonal Antibody
<b>Description</b>	Rabbit Polyclonal Antibody
<b>Host</b>	Rabbit
<b>Application</b>	WB,IHC-P,IF-P,IF-F,ICC/IF,ELISA
<b>Reactivity</b>	Human,Rat,Mouse

## Performance

<b>Conjugation</b>	Unconjugated
<b>Modification</b>	Unmodified
<b>Isotype</b>	IgG
<b>Clonality</b>	Polyclonal
<b>Form</b>	Liquid
<b>Storage</b>	Store at 4°C short term. Aliquot and store at -20°C long term. Avoid freeze/thaw cycles.
<b>Buffer</b>	Liquid in PBS containing 50% glycerol, 0.5% BSA and 0.02% New type preservative N.
<b>Purification</b>	Affinity purification

## Immunogen

<b>Gene Name</b>	RRH
<b>Alternative Names</b>	RRH; Visual pigment-like receptor peropsin
<b>Gene ID</b>	10692.0
<b>SwissProt ID</b>	O14718.The antiserum was produced against synthesized peptide derived from human RRH. AA range:201-250

## Application

<b>Dilution Ratio</b>	WB 1:500-1:2000, ELISA 1:10000, IF-P/IF-F/ICC/IF 1:50-200
<b>Molecular Weight</b>	37kDa

## Background

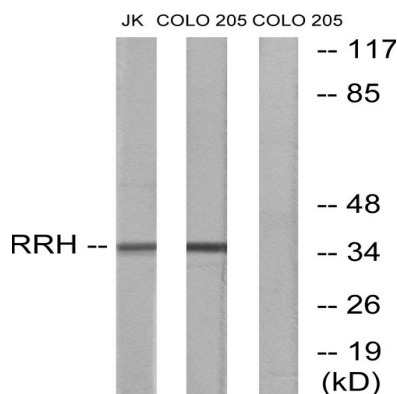
**Product Name: Peropsin Rabbit Polyclonal Antibody**  
**Catalog #: APRab15979**



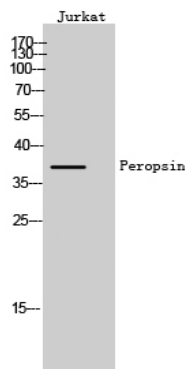
Opsins are members of the guanine nucleotide-binding protein (G protein)-coupled receptor superfamily. This gene belongs to the seven-exon subfamily of mammalian opsin genes that includes opsin 5 and retinal G protein coupled receptor. [provided by RefSeq, Jul 2008],function:May play a role in rpe physiology either by detecting light directly or by monitoring the concentration of retinoids or other photoreceptor-derived compounds.,similarity:Belongs to the G-protein coupled receptor 1 family. Opsin subfamily.,tissue specificity:Found only in the eye, where it is localized to the retinal pigment epithelium (RPE). In the RPE, it is localized to the microvilli that surround the photoreceptor outer segments.,

## Research Area

## Image Data



Western blot analysis of lysates from Jurkat and COLO cells, using RRH Antibody. The lane on the right is blocked with the synthesized peptide.



Western Blot analysis of Jurkat cells using Peropsin Polyclonal Antibody

## Note

For research use only.