

Product Name: Periphilin 1 Rabbit Polyclonal Antibody
Catalog #: AP Rab15976



Summary

Production Name	Periphilin 1 Rabbit Polyclonal Antibody
Description	Rabbit Polyclonal Antibody
Host	Rabbit
Application	WB,IHC-P,IF-P,IF-F,ICC/IF,ELISA
Reactivity	Human,Mouse

Performance

Conjugation	Unconjugated
Modification	Unmodified
Isotype	IgG
Clonality	Polyclonal
Form	Liquid
Storage	Store at 4°C short term. Aliquot and store at -20°C long term. Avoid freeze/thaw cycles.
Buffer	Liquid in PBS containing 50% glycerol, 0.5% BSA and 0.02% New type preservative N.
Purification	Affinity purification

Immunogen

Gene Name	PPHLN1
Alternative Names	PPHLN1; HSPC206; HSPC232; Periphilin-1; Gastric cancer antigen Ga50
Gene ID	51535.0
SwissProt ID	Q8NEY8.The antiserum was produced against synthesized peptide derived from human PPHLN. AA range:71-120

Application

Dilution Ratio	WB 1:500-1:2000, IHC-P 1:100-1:300, ELISA 1:5000, IF-P/IF-F/ICC/IF 1:50-200
Molecular Weight	53kDa

Background

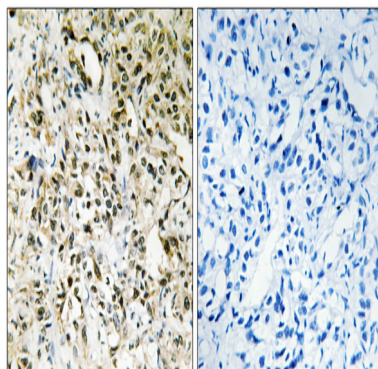
Product Name: Periphilin 1 Rabbit Polyclonal Antibody
Catalog #: AP Rab15976



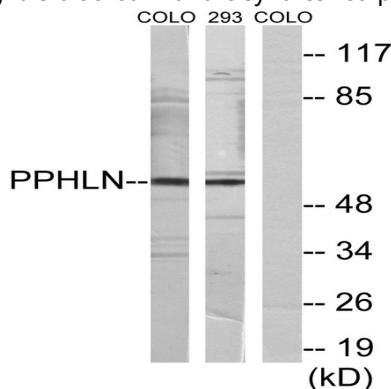
The protein encoded by this gene is one of the several proteins that become sequentially incorporated into the cornified cell envelope during the terminal differentiation of keratinocyte at the outer layers of epidermis. This protein interacts with periplakin, which is known as a precursor of the cornified cell envelope. The cellular localization pattern and insolubility of this protein suggest that it may play a role in epithelial differentiation and contribute to epidermal integrity and barrier formation. Multiple alternatively spliced transcript variants encoding distinct isoforms have been observed. [provided by RefSeq, Jul 2008],function:Involved in epithelial differentiation and contributes to epidermal integrity and barrier formation.,PTM:Substrate of transglutaminase (in vitro).,subcellular location:In undifferentiated keratinocytes expressed in speckle-type nuclear granules and at the nuclear membrane, but in the differentiated keratinocytes colocalized with periplakin at the cell periphery and at cell-cell junctions.,subunit:Homodimer. Interacts with PPL,tissue specificity:Ubiquitous.,

Research Area

Image Data

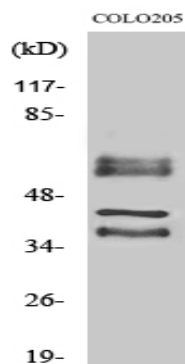


Immunohistochemistry analysis of paraffin-embedded human liver carcinoma tissue, using PPHLN Antibody. The picture on the right is blocked with the synthesized peptide.



Western blot analysis of lysates from COLO and 293 cells, using PPHLN Antibody. The lane on the right is blocked with the synthesized peptide.

Product Name: Periphilin 1 Rabbit Polyclonal Antibody
Catalog #: APRab15976



Western Blot analysis of various cells using Periphilin 1 Polyclonal Antibody

Note

For research use only.