

Product Name: PDZ-RhoGEF Rabbit Polyclonal Antibody
Catalog #: AP Rab15944



Summary

Production Name	PDZ-RhoGEF Rabbit Polyclonal Antibody
Description	Rabbit Polyclonal Antibody
Host	Rabbit
Application	WB,IHC-P
Reactivity	Human,Mouse,Rat

Performance

Conjugation	Unconjugated
Modification	Unmodified
Isotype	IgG
Clonality	Polyclonal
Form	Liquid
Storage	Store at 4°C short term. Aliquot and store at -20°C long term. Avoid freeze/thaw cycles.
Buffer	Liquid in PBS containing 50% glycerol, 0.5% BSA and 0.02% New type preservative N.
Purification	Affinity purification

Immunogen

Gene Name	ARHGEF11
Alternative Names	ARHGEF11; KIAA0380; Rho guanine nucleotide exchange factor 11; PDZ-RhoGEF
Gene ID	9826.0
SwissProt ID	O15085.The antiserum was produced against synthesized peptide derived from human ARHGEF11. AA range:198-247

Application

Dilution Ratio	WB 1:500-2000, IHC-P 1:50-300
Molecular Weight	

Background

Product Name: PDZ-RhoGEF Rabbit Polyclonal Antibody
Catalog #: AP Rab15944

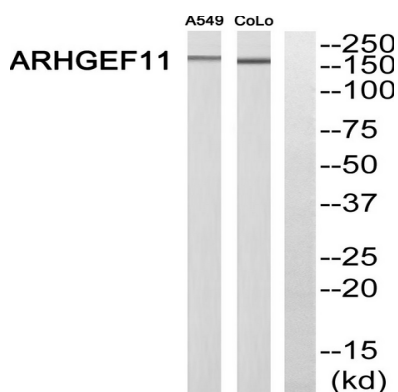


Rho GTPases play a fundamental role in numerous cellular processes that are initiated by extracellular stimuli that work through G protein coupled receptors. The encoded protein may form a complex with G proteins and stimulate Rho-dependent signals. A similar protein in rat interacts with glutamate transporter EAAT4 and modulates its glutamate transport activity. Expression of the rat protein induces the reorganization of the actin cytoskeleton and its overexpression induces the formation of membrane ruffling and filopodia. Two alternative transcripts encoding different isoforms have been described. [provided by RefSeq, Jul 2008],domain:The poly-Pro region is essential for plasma membrane localization upon stimulation.,function:May play a role in the regulation of RhoA GTPase by guanine nucleotide-binding alpha-12 (GNA12) and alpha-13 (GNA13). Acts as guanine nucleotide exchange factor (GEF) for RhoA GTPase and may act as GTPase-activating protein (GAP) for GNA12 and GNA13.,similarity:Contains 1 DH (DBL-homology) domain.,similarity:Contains 1 PDZ (DHR) domain.,similarity:Contains 1 PH domain.,similarity:Contains 1 RGS (RGS-like) domain.,subcellular location:Translocated to the membrane upon stimulation.,subunit:Interacts with GNA12 and GNA13 through the RGS domain. Interacts with RHOA, PLXNB1 and PLXNB2. Interacts with SLC1A6.,tissue specificity:Ubiquitously expressed.,

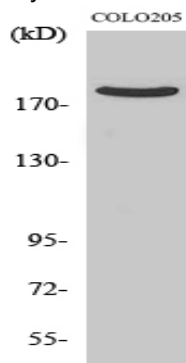
Research Area

Regulation of Actin Dynamics; AMPK

Image Data



Western blot analysis of ARHGEF11 Antibody. The lane on the right is blocked with the ARHGEF11 peptide.



Product Name: PDZ-RhoGEF Rabbit Polyclonal Antibody
Catalog #: APRab15944



Western Blot analysis of various cells using PDZ-RhoGEF Polyclonal Antibody

Note

For research use only.