

Product Name: PDIK1L Rabbit Polyclonal Antibody
Catalog #: APRab15913



Summary

Production Name	PDIK1L Rabbit Polyclonal Antibody
Description	Rabbit Polyclonal Antibody
Host	Rabbit
Application	WB,IHC-P,IF-P,IF-F,ICC/IF,ELISA
Reactivity	Human,Mouse

Performance

Conjugation	Unconjugated
Modification	Unmodified
Isotype	IgG
Clonality	Polyclonal
Form	Liquid
Storage	Store at 4°C short term. Aliquot and store at -20°C long term. Avoid freeze/thaw cycles.
Buffer	Liquid in PBS containing 50% glycerol, 0.5% BSA and 0.02% New type preservative N.
Purification	Affinity purification

Immunogen

Gene Name	PDIK1L
Alternative Names	PDIK1L; CLIK1L; Serine/threonine-protein kinase PDIK1L; PDLIM1-interacting kinase 1-like
Gene ID	149420.0
SwissProt ID	Q8N165.The antiserum was produced against synthesized peptide derived from human PDIK1L. AA range:101-150

Application

Dilution Ratio	WB 1:500-1:2000, IHC-P 1:100-1:300, ELISA 1:40000, IF-P/IF-F/ICC/IF 1:50-200
Molecular Weight	39kDa

Product Name: PDIK1L Rabbit Polyclonal Antibody
Catalog #: AP Rab15913

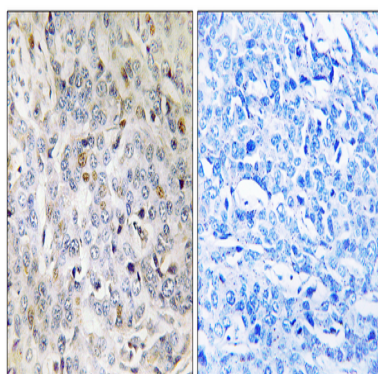


Background

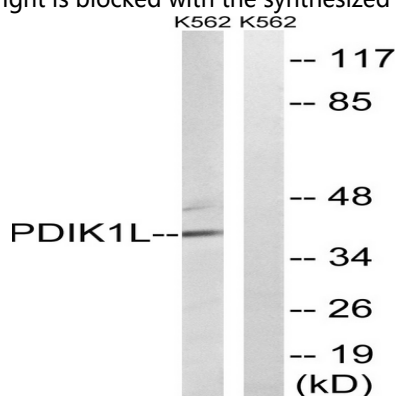
catalytic activity:ATP + a protein = ADP + a phosphoprotein.,similarity:Belongs to the protein kinase superfamily. Ser/Thr protein kinase family.,similarity:Contains 1 protein kinase domain.,tissue specificity:Expressed in liver, kidney, pancreas, spleen, thymus and prostate.,catalytic activity:ATP + a protein = ADP + a phosphoprotein.,similarity:Belongs to the protein kinase superfamily. Ser/Thr protein kinase family.,similarity:Contains 1 protein kinase domain.,tissue specificity:Expressed in liver, kidney, pancreas, spleen, thymus and prostate.,

Research Area

Image Data

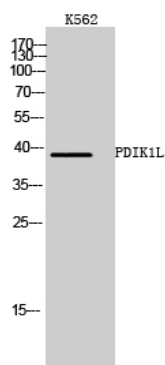


Immunohistochemistry analysis of paraffin-embedded human breast carcinoma tissue, using PDIK1L Antibody. The picture on the right is blocked with the synthesized peptide.



Western blot analysis of lysates from K562 cells, using PDIK1L Antibody. The lane on the right is blocked with the synthesized peptide.

Product Name: PDIK1L Rabbit Polyclonal Antibody
Catalog #: APRab15913



Western Blot analysis of K562 cells using PDIK1L Polyclonal Antibody cells nucleus extracted by Minute TM Cytoplasmic and Nuclear Fractionation kit (SC-003, Invent biotech, MN, USA) .

Note

For research use only.