

Product Name: PDE2A Rabbit Polyclonal Antibody
Catalog #: APRab15887



Summary

Production Name	PDE2A Rabbit Polyclonal Antibody
Description	Rabbit Polyclonal Antibody
Host	Rabbit
Application	WB,ELISA
Reactivity	Human,Mouse,Rat

Performance

Conjugation	Unconjugated
Modification	Unmodified
Isotype	IgG
Clonality	Polyclonal
Form	Liquid
Storage	Store at 4°C short term. Aliquot and store at -20°C long term. Avoid freeze/thaw cycles.
Buffer	Liquid in PBS containing 50% glycerol, and 0.02% New type preservative N.
Purification	Affinity purification

Immunogen

Gene Name	PDE2A
Alternative Names	
Gene ID	5138.0
SwissProt ID	O00408. Synthesized peptide derived from part region of human protein

Application

Dilution Ratio	WB 1:500-2000, ELISA 1:5000-20000
Molecular Weight	103kDa

Background

alternative products:Additional isoforms seem to exist. Experimental confirmation may be lacking for some isoforms,catalytic activity:Nucleoside 3',5'-cyclic phosphate + H(2)O = nucleoside 5'-phosphate.,function:Hydrolyzes both

Product Name: PDE2A Rabbit Polyclonal Antibody
Catalog #: AP Rab15887

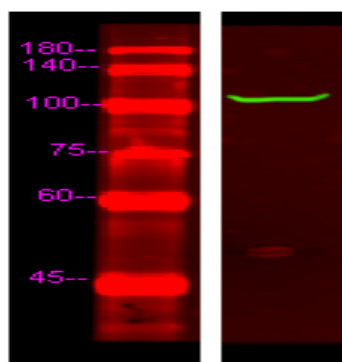


cyclic AMP (cAMP) and cyclic GMP (cGMP).,similarity:Belongs to the cyclic nucleotide phosphodiesterase family.,similarity:Contains 2 GAF domains.,subunit:Homodimer.,tissue specificity:Expressed in brain and to a lesser extent in heart, placenta, lung, skeletal muscle, kidney and pancreas.,alternative products:Additional isoforms seem to exist. Experimental confirmation may be lacking for some isoforms,catalytic activity:Nucleoside 3',5'-cyclic phosphate + H₂O = nucleoside 5'-phosphate.,function:Hydrolyzes both cyclic AMP (cAMP) and cyclic GMP (cGMP).,similarity:Belongs to the cyclic nucleotide phosphodiesterase family.,similarity:Contains 2 GAF domains.,subunit:Homodimer.,tissue specificity:Expressed in brain and to a lesser extent in heart, placenta, lung, skeletal muscle, kidney and pancreas.,

Research Area

Purine metabolism;

Image Data



Western Blot analysis of Hela lysis, using primary antibody at 1:1000 dilution. Secondary antibody was diluted at 1:10000

Note

For research use only.