

Product Name: PD2R Rabbit Polyclonal Antibody
Catalog #: APRab15875



Summary

Production Name	PD2R Rabbit Polyclonal Antibody
Description	Rabbit Polyclonal Antibody
Host	Rabbit
Application	WB,IHC-P,IF-P,IF-F,ICC/IF,ELISA
Reactivity	Human,Rat,Mouse

Performance

Conjugation	Unconjugated
Modification	Unmodified
Isotype	IgG
Clonality	Polyclonal
Form	Liquid
Storage	Store at 4°C short term. Aliquot and store at -20°C long term. Avoid freeze/thaw cycles.
Buffer	Liquid in PBS containing 50% glycerol, 0.5% BSA and 0.02% New type preservative N.
Purification	Affinity purification

Immunogen

Gene Name	PTGDR
Alternative Names	PTGDR; Prostaglandin D2 receptor; PGD receptor; PGD2 receptor; Prostanoid DP receptor
Gene ID	5729.0
SwissProt ID	Q13258.The antiserum was produced against synthesized peptide derived from human PTGDR. AA range:263-312

Application

Dilution Ratio	WB 1:500-1:2000, IHC-P 1:100-1:300, IF-P/IF-F/ICC/IF 1:200-1:1000, ELISA 1:5000.Not yet tested in other applications.
Molecular Weight	40kDa

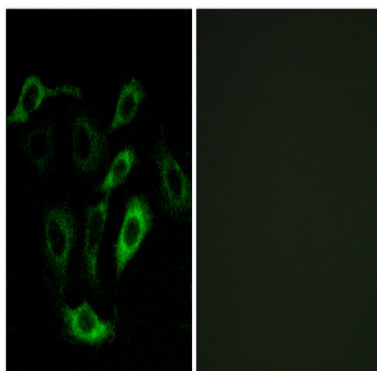
Background

This gene encodes a member of the guanine nucleotide-binding protein (G protein)-coupled receptor (GPCR) superfamily. The receptors are seven-pass transmembrane proteins that respond to extracellular cues and activate intracellular signal transduction pathways. This protein is reported to be a receptor for prostaglandin D₂, which is a mediator of allergic inflammation and allergic airway inflammation in asthma. Alternative splicing results in multiple transcript variants. [provided by RefSeq, Jul 2013],disease:Genetic variations in PTGDR are associated with susceptibility to asthma-related traits type 1 (ASRT1) [MIM:607277]. Asthma-related traits include clinical symptoms of asthma, such as coughing, wheezing and dyspnea.,function:Receptor for prostaglandin D₂ (PGD₂). The activity of this receptor is mainly mediated by G(s) proteins that stimulate adenylate cyclase, resulting in an elevation of intracellular cAMP. A mobilization of calcium is also observed, but without formation of inositol 1,4,5-trisphosphate.,similarity:Belongs to the G-protein coupled receptor 1 family.,tissue specificity:Expressed in retinal choroid, ciliary epithelium, longitudinal and circular ciliary muscles, iris, small intestine and platelet membranes.,

Research Area

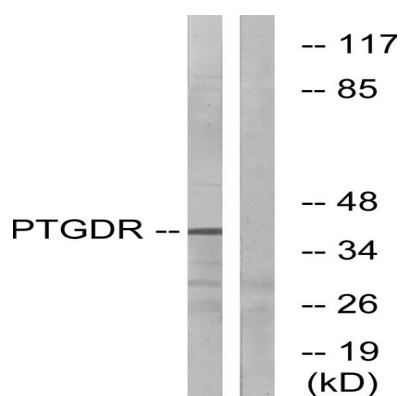
Neuroactive ligand-receptor interaction;

Image Data

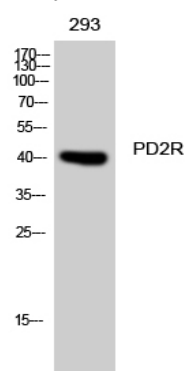


Immunofluorescence analysis of A549 cells, using PTGDR Antibody. The picture on the right is blocked with the synthesized peptide.

Product Name: PD2R Rabbit Polyclonal Antibody
Catalog #: APRab15875



Western blot analysis of lysates from HepG2 cells, using PTGDR Antibody. The lane on the right is blocked with the synthesized peptide.



Western Blot analysis of 293 cells using PD2R Polyclonal Antibody diluted at 1: 1000

Note

For research use only.