

Product Name: PCY1A Rabbit Polyclonal Antibody
Catalog #: APRab15870



Summary

Production Name	PCY1A Rabbit Polyclonal Antibody
Description	Rabbit Polyclonal Antibody
Host	Rabbit
Application	WB,ELISA
Reactivity	Human,Mouse,Rat

Performance

Conjugation	Unconjugated
Modification	Unmodified
Isotype	IgG
Clonality	Polyclonal
Form	Liquid
Storage	Store at 4°C short term. Aliquot and store at -20°C long term. Avoid freeze/thaw cycles.
Buffer	Liquid in PBS containing 50% glycerol, and 0.02% New type preservative N.
Purification	Affinity purification

Immunogen

Gene Name	PCYT1A CTPCT PCYT1
Alternative Names	
Gene ID	5130.0
SwissProt ID	P49585. Synthesized peptide derived from part region of human protein

Application

Dilution Ratio	WB 1:500-2000, ELISA 1:5000-20000
Molecular Weight	40kDa

Background

This gene belongs to the cytidylyltransferase family and is involved in the regulation of phosphatidylcholine biosynthesis. Mutations in this gene are associated with spondylometaphyseal dysplasia with cone-rod dystrophy. Alternatively spliced

Product Name: PCY1A Rabbit Polyclonal Antibody
Catalog #: AP Rab15870

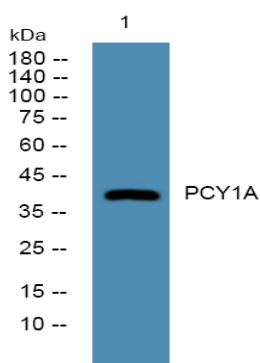


transcript variants have been found for this gene. [provided by RefSeq, Aug 2015], catalytic activity: CTP + choline phosphate = diphosphate + CDP-choline., enzyme regulation: By phosphorylation., function: Controls phosphatidylcholine synthesis., pathway: Phospholipid metabolism; phosphatidylcholine biosynthesis; phosphatidylcholine from phosphocholine: step 1/2., PTM: The serine residues of the C-terminus are phosphorylated. The inactive soluble form is stabilized by phosphorylation, the active membrane bound form is promoted by anionic lipids or diacylglycerol, and is stabilized by dephosphorylation., similarity: Belongs to the cytidylyltransferase family., subcellular location: It can interconvert between an inactive cytosolic form and an active membrane-bound form., subunit: Homodimer; disulfide-linked.,

Research Area

Glycerophospholipid metabolism;

Image Data



Western blot analysis of lysates from A431 cells, primary antibody was diluted at 1:1000, 4° over night

Note

For research use only.