

**Product Name: Pbx 4 Rabbit Polyclonal Antibody**  
**Catalog #: APRab15810**



## Summary

<b>Production Name</b>	Pbx 4 Rabbit Polyclonal Antibody
<b>Description</b>	Rabbit Polyclonal Antibody
<b>Host</b>	Rabbit
<b>Application</b>	IHC-P,IF-P,IF-F,ICC/IF,ELISA
<b>Reactivity</b>	Human,Rat,Mouse

## Performance

<b>Conjugation</b>	Unconjugated
<b>Modification</b>	Unmodified
<b>Isotype</b>	IgG
<b>Clonality</b>	Polyclonal
<b>Form</b>	Liquid
<b>Storage</b>	Store at 4°C short term. Aliquot and store at -20°C long term. Avoid freeze/thaw cycles.
<b>Buffer</b>	Liquid in PBS containing 50% glycerol, 0.5% BSA and 0.02% New type preservative N.
<b>Purification</b>	Affinity purification

## Immunogen

<b>Gene Name</b>	PBX4
<b>Alternative Names</b>	PBX4; Pre-B-cell leukemia transcription factor 4; Homeobox protein PBX4
<b>Gene ID</b>	80714.0
<b>SwissProt ID</b>	Q9BYU1. Synthesized peptide derived from Pbx 4 . at AA range: 220-300

## Application

<b>Dilution Ratio</b>	IHC-P 1:100-1:300, ELISA 1:20000, IF-P/IF-F/ICC/IF 1:50-200
<b>Molecular Weight</b>	

## Background

This gene encodes a member of the pre-B cell leukemia transcription factor family. These proteins are homeobox proteins that play critical roles in embryonic development and cellular differentiation both as Hox cofactors and through Hox-

**Product Name: Pbx 4 Rabbit Polyclonal Antibody**  
**Catalog #: APRab15810**

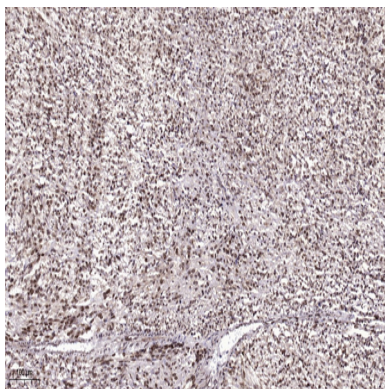
---



independent pathways. The encoded protein contains a homeobox DNA-binding domain, but specific functions of the protein have not been determined. Alternatively spliced transcript variants have been observed for this gene. [provided by RefSeq, May 2011],similarity:Belongs to the TALE/PBX homeobox family.,similarity:Contains 1 homeobox DNA-binding domain.,

## Research Area

## Image Data



Immunohistochemical analysis of paraffin-embedded human Colon cancer. 1, Antibody was diluted at 1:200 (4° overnight) .  
2, Tris-EDTA,pH9.0 was used for antigen retrieval. 3,Secondary antibody was diluted at 1:200 (room temperature, 45min) .

## Note

For research use only.