

Product Name: Pax-5 Rabbit Polyclonal Antibody
Catalog #: APRab15788



Summary

Production Name	Pax-5 Rabbit Polyclonal Antibody
Description	Rabbit Polyclonal Antibody
Host	Rabbit
Application	WB,ELISA
Reactivity	Human,Mouse

Performance

Conjugation	Unconjugated
Modification	Unmodified
Isotype	IgG
Clonality	Polyclonal
Form	Liquid
Storage	Store at 4°C short term. Aliquot and store at -20°C long term. Avoid freeze/thaw cycles.
Buffer	Liquid in PBS containing 50% glycerol, 0.5% BSA and 0.02% New type preservative N.
Purification	Affinity purification

Immunogen

Gene Name	PAX5
Alternative Names	PAX5; Paired box protein Pax-5; B-cell-specific transcription factor; BSAP
Gene ID	5079.0
SwissProt ID	Q02548.The antiserum was produced against synthesized peptide derived from human Pax-5. AA range:1-50

Application

Dilution Ratio	WB 1:500-1:2000, ELISA 1:40000.Not yet tested in other applications.
Molecular Weight	40kDa

Background

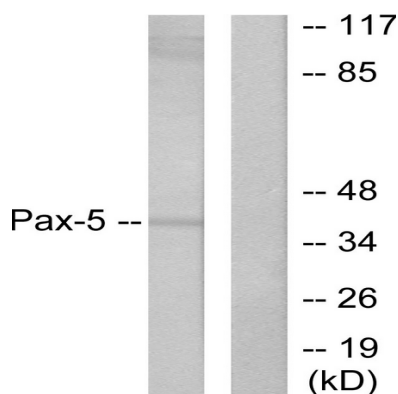
Product Name: Pax-5 Rabbit Polyclonal Antibody
Catalog #: AP Rab15788



This gene encodes a member of the paired box (PAX) family of transcription factors. The central feature of this gene family is a novel, highly conserved DNA-binding motif, known as the paired box. Paired box transcription factors are important regulators in early development, and alterations in the expression of their genes are thought to contribute to neoplastic transformation. This gene encodes the B-cell lineage specific activator protein that is expressed at early, but not late stages of B-cell differentiation. Its expression has also been detected in developing CNS and testis and so the encoded protein may also play a role in neural development and spermatogenesis. This gene is located at 9p13, which is involved in t(9;14)(p13;q32) translocations recurring in small lymphocytic lymphomas of the plasmacytoid subtype, and in derived large-cell lymphomas. This translocation brings the potent E-mu enhancer. **developmental stage:** Expressed at early B-cell differentiation, in the developing CNS and in adult testis. **disease:** A chromosomal aberration involving PAX5 is a cause of acute lymphoblastic leukemia. Translocation t(9;18)(p13;q11.2) with ZNF521. Translocation t(9;3)(p13;p14.1) with FOXP1. Translocation t(9;12)(p13;p13) with ETV6. **function:** May play an important role in B-cell differentiation as well as neural development and spermatogenesis. Involved in the regulation of the CD19 gene, a B-lymphoid-specific target gene. **PTM:** O-glycosylated. **similarity:** Contains 1 paired domain. **subunit:** Interacts with DAXX (By similarity). Binds DNA as a monomer. Binds TLE4,

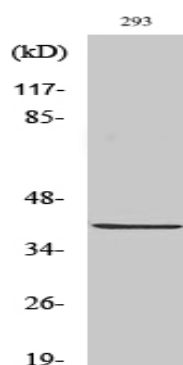
Research Area

Image Data



Western blot analysis of lysates from 293 cells, using Pax-5 Antibody. The lane on the right is blocked with the synthesized peptide.

Product Name: Pax-5 Rabbit Polyclonal Antibody
Catalog #: APRab15788



Western Blot analysis of various cells using Pax-5 Polyclonal Antibody cells nucleus extracted by Minute TM Cytoplasmic and Nuclear Fractionation kit (SC-003, Invent biotech, MN, USA) .

Note

For research use only.