

**Product Name: PACAP Rabbit Polyclonal Antibody**  
**Catalog #: APRab15685**



## Summary

<b>Production Name</b>	PACAP Rabbit Polyclonal Antibody
<b>Description</b>	Rabbit Polyclonal Antibody
<b>Host</b>	Rabbit
<b>Application</b>	IHC-P,IF-P,IF-F,ICC/IF,ELISA
<b>Reactivity</b>	Human,Rat,Mouse

## Performance

<b>Conjugation</b>	Unconjugated
<b>Modification</b>	Unmodified
<b>Isotype</b>	IgG
<b>Clonality</b>	Polyclonal
<b>Form</b>	Liquid
<b>Storage</b>	Store at 4°C short term. Aliquot and store at -20°C long term. Avoid freeze/thaw cycles.
<b>Buffer</b>	Liquid in PBS containing 50% glycerol, 0.5% BSA and 0.02% New type preservative N.
<b>Purification</b>	Affinity purification

## Immunogen

<b>Gene Name</b>	PACAP HSPC190
<b>Alternative Names</b>	Plasma cell-induced resident endoplasmic reticulum protein (Plasma cell-induced resident ER protein;pERp1;Proapoptotic caspase adapter protein)
<b>Gene ID</b>	51237.0
<b>SwissProt ID</b>	Q8WU39.Synthetic peptide from human protein at AA range: 1-50

## Application

<b>Dilution Ratio</b>	IHC-P 1:50-200, ELISA 1:10000-20000, IF-P/IF-F/ICC/IF 1:50-200
<b>Molecular Weight</b>	

## Background

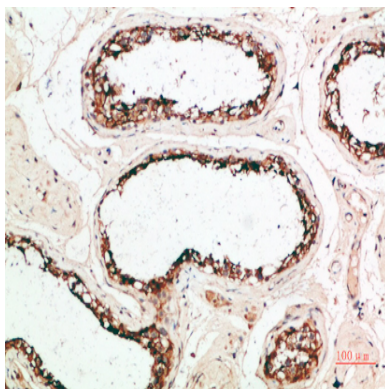
**Product Name: PACAP Rabbit Polyclonal Antibody**  
**Catalog #: APRab15685**



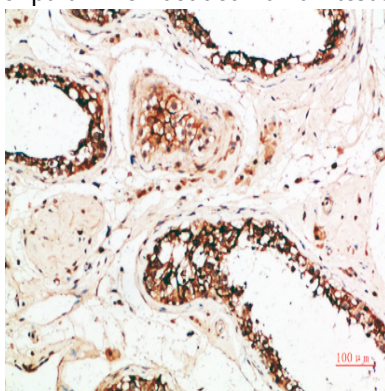
function:May be involved in regulation of apoptosis.,induction:Down-regulated in primary B-cells early after ligand-stimulated activation.,subcellular location:In (PubMed:11350957) diffuse granular localization in the cytoplasm surrounding the nucleus.,subunit:Isoform 2 interacts with CASP2 and CASP9.,tissue specificity:Widely expressed with highest levels in adult brain. Expression is frequently lower in intestinal-type gastric cancer.,function:May be involved in regulation of apoptosis.,induction:Down-regulated in primary B-cells early after ligand-stimulated activation.,subcellular location:In (PubMed:11350957) diffuse granular localization in the cytoplasm surrounding the nucleus.,subunit:Isoform 2 interacts with CASP2 and CASP9.,tissue specificity:Widely expressed with highest levels in adult brain. Expression is frequently lower in intestinal-type gastric cancer.,

## Research Area

## Image Data



Immunohistochemical analysis of paraffin-embedded human-testis, antibody was diluted at 1:200



Immunohistochemical analysis of paraffin-embedded human-testis, antibody was diluted at 1:200

## Note

For research use only.