

Product Name: p164-RhoGEF Rabbit Polyclonal Antibody
Catalog #: APRab15581

Summary

Production Name	p164-RhoGEF Rabbit Polyclonal Antibody
Description	Rabbit Polyclonal Antibody
Host	Rabbit
Application	IHC-P,IF-P,IF-F,ICC/IF,ELISA
Reactivity	Human,Mouse

Performance

Conjugation	Unconjugated
Modification	Unmodified
Isotype	IgG
Clonality	Polyclonal
Form	Liquid
Storage	Store at 4°C short term. Aliquot and store at -20°C long term. Avoid freeze/thaw cycles.
Buffer	Liquid in PBS containing 50% glycerol, 0.5% BSA and 0.02% New type preservative N.
Purification	Affinity purification

Immunogen

Gene Name	ARHGEF17 ARHGEF17; KIAA0337; TEM4; Rho guanine nucleotide exchange factor 17; 164 kDa
Alternative Names	Rho-specific guanine-nucleotide exchange factor; p164-RhoGEF; p164RhoGEF; Tumor endothelial marker 4
Gene ID	9828.0
SwissProt ID	Q96PE2. The antiserum was produced against synthesized peptide derived from human ARHGEF17. AA range:431-480

Application

Dilution Ratio	IHC-P 1:100-1:300, IF-P/IF-F/ICC/IF 1:200-1:1000, ELISA 1:5000. Not yet tested in other applications.
-----------------------	---

Product Name: p164-RhoGEF Rabbit Polyclonal Antibody
Catalog #: APRab15581

Molecular Weight

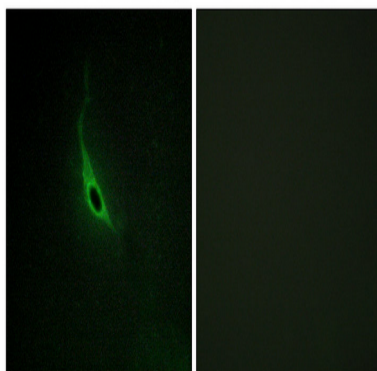
Background

function:Acts as guanine nucleotide exchange factor (GEF) for RhoA GTPases.,similarity:Contains 1 DH (DBL-homology) domain.,tissue specificity:Highly expressed in the heart.,function:Acts as guanine nucleotide exchange factor (GEF) for RhoA GTPases.,similarity:Contains 1 DH (DBL-homology) domain.,tissue specificity:Highly expressed in the heart.,

Research Area

Regulation of Actin Dynamics; AMPK

Image Data



Immunofluorescence analysis of HepG2 cells, using CARD6 Antibody diluted at 1:50. The picture on the right is blocked with the synthesized peptide.

Note

For research use only.