

**Product Name: ORAOV1 Rabbit Polyclonal Antibody**  
**Catalog #: APRab15494**



## Summary

<b>Production Name</b>	ORAOV1 Rabbit Polyclonal Antibody
<b>Description</b>	Rabbit Polyclonal Antibody
<b>Host</b>	Rabbit
<b>Application</b>	WB,IHC-P,IF-P,IF-F,ICC/IF,ELISA
<b>Reactivity</b>	Human,Rat,Mouse

## Performance

<b>Conjugation</b>	Unconjugated
<b>Modification</b>	Unmodified
<b>Isotype</b>	IgG
<b>Clonality</b>	Polyclonal
<b>Form</b>	Liquid
<b>Storage</b>	Store at 4°C short term. Aliquot and store at -20°C long term. Avoid freeze/thaw cycles.
<b>Buffer</b>	Liquid in PBS containing 50% glycerol, 0.5% BSA and 0.02% New type preservative N.
<b>Purification</b>	Affinity purification

## Immunogen

<b>Gene Name</b>	ORAOV1
<b>Alternative Names</b>	ORAOV1; TAOS1; Oral cancer-overexpressed protein 1; Tumor-amplified and overexpressed sequence 1
<b>Gene ID</b>	220064.0
<b>SwissProt ID</b>	Q8WV07.The antiserum was produced against synthesized peptide derived from human ORAV1. AA range:81-130

## Application

<b>Dilution Ratio</b>	WB 1:500-1:2000, IHC-P 1:100-1:300, IF-P/IF-F/ICC/IF 1:200-1:1000, ELISA 1:10000.Not yet tested in other applications.
<b>Molecular Weight</b>	15kDa

**Product Name: ORAOV1 Rabbit Polyclonal Antibody**  
**Catalog #: APRab15494**

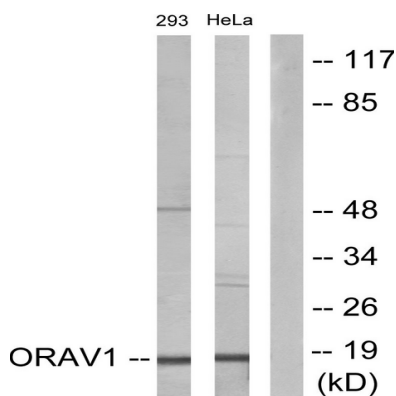


## Background

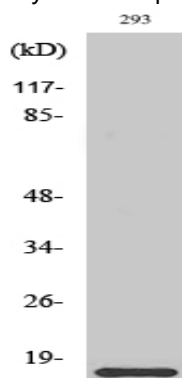
miscellaneous:Amplified and overexpressed in oral cancer cells.,similarity:Belongs to the ORAOV1 family.,tissue specificity:Widely expressed. Highly expressed in placenta, kidney and skeletal muscle.,miscellaneous:Amplified and overexpressed in oral cancer cells.,similarity:Belongs to the ORAOV1 family.,tissue specificity:Widely expressed. Highly expressed in placenta, kidney and skeletal muscle.,

## Research Area

## Image Data



Western blot analysis of lysates from 293 and HeLa cells, using ORAV1 Antibody. The lane on the right is blocked with the synthesized peptide.



Western Blot analysis of various cells using ORAOV1 Polyclonal Antibody diluted at 1 : 2000

## Note

For research use only.