

**Product Name: Olfactory receptor 8D1 Rabbit Polyclonal Antibody**  
**Catalog #: APRab15324**

---

## Summary

<b>Production Name</b>	Olfactory receptor 8D1 Rabbit Polyclonal Antibody
<b>Description</b>	Rabbit Polyclonal Antibody
<b>Host</b>	Rabbit
<b>Application</b>	WB,IF-P,IF-F,ICC/IF,ELISA
<b>Reactivity</b>	Human,Rat,Mouse

## Performance

<b>Conjugation</b>	Unconjugated
<b>Modification</b>	Unmodified
<b>Isotype</b>	IgG
<b>Clonality</b>	Polyclonal
<b>Form</b>	Liquid
<b>Storage</b>	Store at 4°C short term. Aliquot and store at -20°C long term. Avoid freeze/thaw cycles.
<b>Buffer</b>	Liquid in PBS containing 50% glycerol, 0.5% BSA and 0.02% New type preservative N.
<b>Purification</b>	Affinity purification

## Immunogen

<b>Gene Name</b>	OR8D1
<b>Alternative Names</b>	OR8D1; OR8D3; Olfactory receptor 8D1; OST004; Olfactory receptor 8D3; Olfactory receptor OR11-301; Olfactory receptor-like protein JCG9
<b>Gene ID</b>	283159.0
<b>SwissProt ID</b>	Q8WZ84.The antiserum was produced against synthesized peptide derived from human OR8D1. AA range:234-283

## Application

<b>Dilution Ratio</b>	WB 1:500-1:2000, IF-P/IF-F/ICC/IF 1:200-1:1000, ELISA 1:20000.Not yet tested in other applications.
-----------------------	---

**Product Name: Olfactory receptor 8D1 Rabbit Polyclonal Antibody**  
**Catalog #: AP Rab15324**

---

**Molecular Weight**                      34kDa

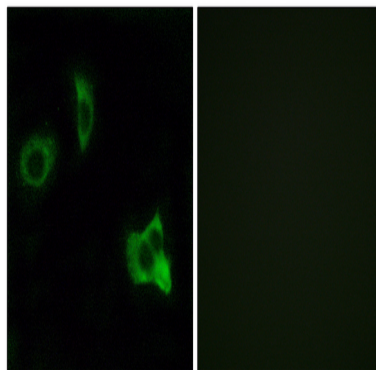
## Background

olfactory receptor family 8 subfamily D member 1(OR8D1) Homo sapiens    Olfactory receptors interact with odorant molecules in the nose, to initiate a neuronal response that triggers the perception of a smell. The olfactory receptor proteins are members of a large family of G-protein-coupled receptors (GPCR) arising from single coding-exon genes. Olfactory receptors share a 7-transmembrane domain structure with many neurotransmitter and hormone receptors and are responsible for the recognition and G protein-mediated transduction of odorant signals. The olfactory receptor gene family is the largest in the genome. The nomenclature assigned to the olfactory receptor genes and proteins for this organism is independent of other organisms. [provided by RefSeq, Jul 2008],function:Odorant receptor (Potential). May be involved in taste perception.,similarity:Belongs to the G-protein coupled receptor 1 family.,tissue specificity:Expressed in the tongue.,

## Research Area

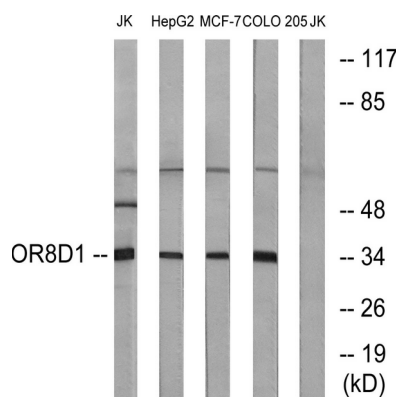
Olfactory transduction;

## Image Data

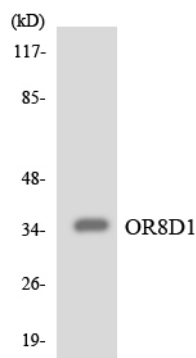


Immunofluorescence analysis of MCF7 cells, using OR8D1 Antibody. The picture on the right is blocked with the synthesized peptide.

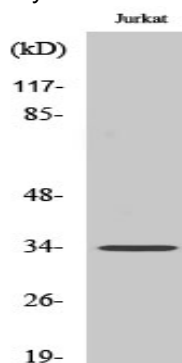
**Product Name: Olfactory receptor 8D1 Rabbit Polyclonal Antibody**  
**Catalog #: APRab15324**



Western blot analysis of lysates from Jurkat, HepG2, MCF-7, and COLO cells, using OR8D1 Antibody. The lane on the right is blocked with the synthesized peptide.



Western blot analysis of the lysates from HUVEC cells using OR8D1 antibody.



Western Blot analysis of various cells using Olfactory receptor 8D1 Polyclonal Antibody

## Note

For research use only.