

Product Name: Olfactory receptor 2A4/7 Rabbit Polyclonal Antibody
Catalog #: APRab15173

Summary

Production Name	Olfactory receptor 2A4/7 Rabbit Polyclonal Antibody
Description	Rabbit Polyclonal Antibody
Host	Rabbit
Application	WB,IF-P,IF-F,ICC/IF,ELISA
Reactivity	Human,Rat,Mouse

Performance

Conjugation	Unconjugated
Modification	Unmodified
Isotype	IgG
Clonality	Polyclonal
Form	Liquid
Storage	Store at 4°C short term. Aliquot and store at -20°C long term. Avoid freeze/thaw cycles.
Buffer	Liquid in PBS containing 50% glycerol, 0.5% BSA and 0.02% New type preservative N.
Purification	Affinity purification

Immunogen

Gene Name	OR2A4/OR2A7
Alternative Names	OR2A7; Olfactory receptor 2A7; Olfactory receptor OR7-18; OR2A4; OR2A10; Olfactory receptor 2A4; Olfactory receptor 2A10; Olfactory receptor OR6-37
Gene ID	401427/79541
SwissProt ID	Q96R45/O95047.The antiserum was produced against synthesized peptide derived from human OR2A4/2A7. AA range:231-280

Application

Dilution Ratio	WB 1:500-1:2000, IF-P/IF-F/ICC/IF 1:200-1:1000, ELISA 1:10000.Not yet tested in other applications.
-----------------------	---

Product Name: Olfactory receptor 2A4/7 Rabbit Polyclonal Antibody
Catalog #: APRab15173

Molecular Weight 35kDa

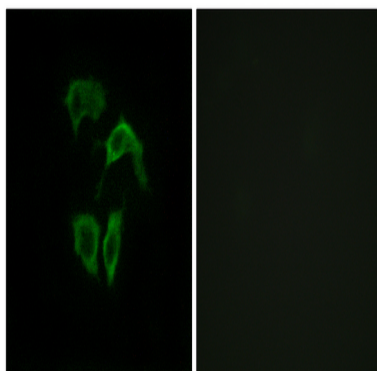
Background

olfactory receptor family 2 subfamily A member 7(OR2A7) Homo sapiens Olfactory receptors interact with odorant molecules in the nose, to initiate a neuronal response that triggers the perception of a smell. The olfactory receptor proteins are members of a large family of G-protein-coupled receptors (GPCR) arising from single coding-exon genes. Olfactory receptors share a 7-transmembrane domain structure with many neurotransmitter and hormone receptors and are responsible for the recognition and G protein-mediated transduction of odorant signals. The olfactory receptor gene family is the largest in the genome. The nomenclature assigned to the olfactory receptor genes and proteins for this organism is independent of other organisms. [provided by RefSeq, Jul 2008],function:Odorant receptor „similarity:Belongs to the G-protein coupled receptor 1 family.,

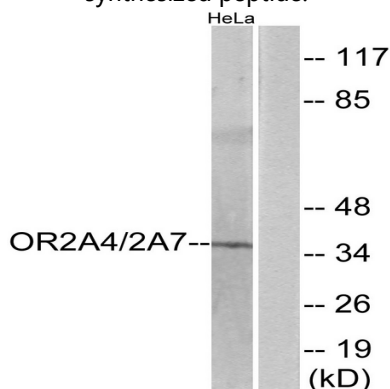
Research Area

Olfactory transduction;

Image Data



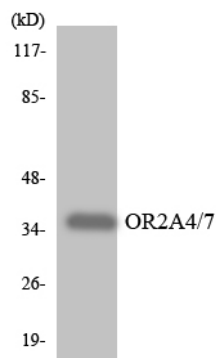
Immunofluorescence analysis of HepG2 cells, using OR2A4/2A7 Antibody. The picture on the right is blocked with the synthesized peptide.



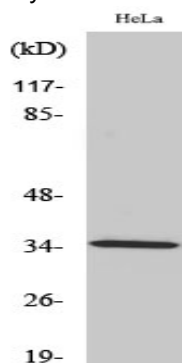
**Product Name: Olfactory receptor 2A4/7 Rabbit
Polyclonal Antibody**
Catalog #: APRab15173



Western blot analysis of lysates from HeLa cells, using OR2A4/2A7 Antibody. The lane on the right is blocked with the synthesized peptide.



Western blot analysis of the lysates from HeLa cells using OR2A4/7 antibody.



Western Blot analysis of various cells using Olfactory receptor 2A4/7 Polyclonal Antibody

Note

For research use only.