

Product Name: Olfactory receptor 1S1/2 Rabbit Polyclonal Antibody
Catalog #: APRab15171

Summary

Production Name	Olfactory receptor 1S1/2 Rabbit Polyclonal Antibody
Description	Rabbit Polyclonal Antibody
Host	Rabbit
Application	WB,IF-P,IF-F,ICC/IF,ELISA
Reactivity	Human,Rat,Mouse

Performance

Conjugation	Unconjugated
Modification	Unmodified
Isotype	IgG
Clonality	Polyclonal
Form	Liquid
Storage	Store at 4°C short term. Aliquot and store at -20°C long term. Avoid freeze/thaw cycles.
Buffer	Liquid in PBS containing 50% glycerol, 0.5% BSA and 0.02% New type preservative N.
Purification	Affinity purification

Immunogen

Gene Name	OR1S1/OR1S2
Alternative Names	OR1S2; Olfactory receptor 1S2; Olfactory receptor OR11-231; OR1S1; Olfactory receptor 1S1; Olfactory receptor OR11-232
Gene ID	219958/219959
SwissProt ID	Q8NGQ3/Q8NH92.The antiserum was produced against synthesized peptide derived from human OR1S1/1S2. AA range:241-290

Application

Dilution Ratio	WB 1:500-1:2000, IF-P/IF-F/ICC/IF 1:200-1:1000, ELISA 1:20000.Not yet tested in other applications.
-----------------------	---

Product Name: Olfactory receptor 1S1/2 Rabbit Polyclonal Antibody
Catalog #: APRab15171

Molecular Weight 33kDa

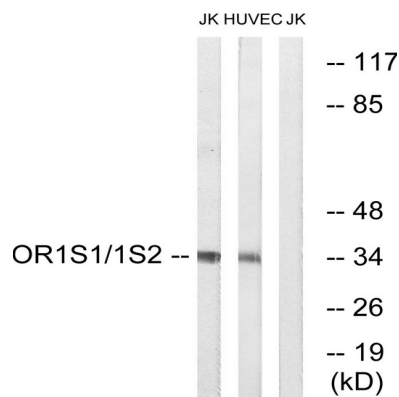
Background

olfactory receptor family 1 subfamily S member 2(OR1S2) Homo sapiens Olfactory receptors interact with odorant molecules in the nose, to initiate a neuronal response that triggers the perception of a smell. The olfactory receptor proteins are members of a large family of G-protein-coupled receptors (GPCR) arising from single coding-exon genes. Olfactory receptors share a 7-transmembrane domain structure with many neurotransmitter and hormone receptors and are responsible for the recognition and G protein-mediated transduction of odorant signals. The olfactory receptor gene family is the largest in the genome. The nomenclature assigned to the olfactory receptor genes and proteins for this organism is independent of other organisms. [provided by RefSeq, Jul 2008],caution:It is uncertain whether Met-1 or Met-14 is the initiator.,function:Odorant receptor ,similarity:Belongs to the G-protein coupled receptor 1 family.,

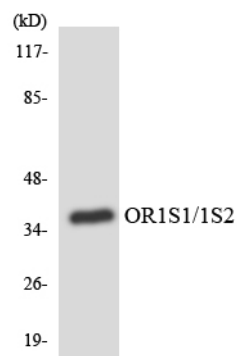
Research Area

Olfactory transduction;

Image Data

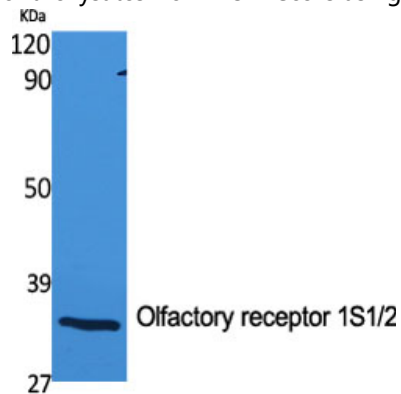


Western blot analysis of lysates from Jurkat and HUVEC cells, using OR1S1/1S2 Antibody. The lane on the right is blocked with the synthesized peptide.

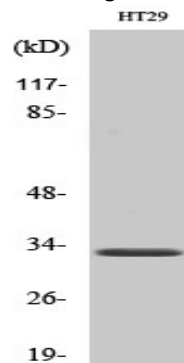


**Product Name: Olfactory receptor 1S1/2 Rabbit
Polyclonal Antibody
Catalog #: APRab15171**

Western blot analysis of the lysates from HUVECCells using OR1S1/1S2 antibody.



Western Blot analysis of various cells using Olfactory receptor 1S1/2 Polyclonal Antibody



Western Blot analysis of HuvEc cells using Olfactory receptor 1S1/2 Polyclonal Antibody

Note

For research use only.