

Product Name: NY-CO-1 Rabbit Polyclonal Antibody
Catalog #: APRab15002



Summary

Production Name	NY-CO-1 Rabbit Polyclonal Antibody
Description	Rabbit Polyclonal Antibody
Host	Rabbit
Application	WB,IHC-P,IF-P,IF-F,ICC/IF,ELISA
Reactivity	Human,Mouse,Rat

Performance

Conjugation	Unconjugated
Modification	Unmodified
Isotype	IgG
Clonality	Polyclonal
Form	Liquid
Storage	Store at 4°C short term. Aliquot and store at -20°C long term. Avoid freeze/thaw cycles.
Buffer	Liquid in PBS containing 50% glycerol, 0.5% BSA and 0.02% New type preservative N.
Purification	Affinity purification

Immunogen

Gene Name	NEMF
Alternative Names	NEMF; SDCCAG1; Nuclear export mediator factor NEMF; Antigen NY-CO-1; Serologically defined colon cancer antigen 1
Gene ID	9147.0
SwissProt ID	O60524.The antiserum was produced against synthesized peptide derived from human SDCG1. AA range:881-930

Application

Dilution Ratio	WB 1:500-1:2000, IHC-P 1:100-1:300, ELISA 1:20000, IF-P/IF-F/ICC/IF 1:50-200
Molecular Weight	123kDa

Product Name: NY-CO-1 Rabbit Polyclonal Antibody
Catalog #: APRab15002

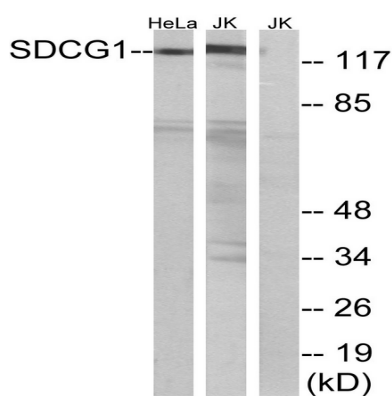


Background

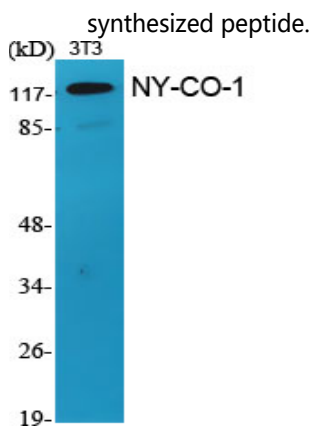
This gene encodes a component of the ribosome quality control complex. The encoded protein facilitates the recognition and ubiquitination of stalled 60S subunits by the ubiquitin ligase listerin. A similar protein in fly functions as a tumor suppressor. [provided by RefSeq, Jul 2016],

Research Area

Image Data

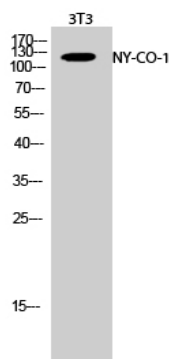


Western blot analysis of lysates from HeLa and Jurkat cells, using SDCG1 Antibody. The lane on the right is blocked with the

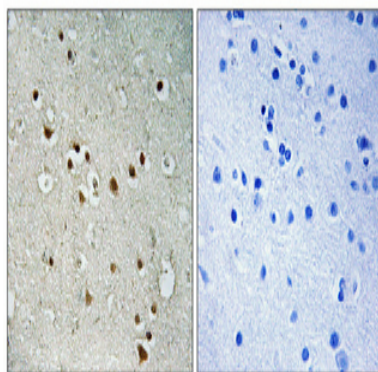


Western Blot analysis of various cells using NY-CO-1 Polyclonal Antibody

Product Name: NY-CO-1 Rabbit Polyclonal Antibody
Catalog #: APRab15002



Western Blot analysis of 3T3 cells using NY-CO-1 Polyclonal Antibody



Immunohistochemical analysis of paraffin-embedded Human brain. Antibody was diluted at 1:100 (4°, overnight) . High-pressure and temperature Tris-EDTA, pH 8.0 was used for antigen retrieval. Negative control (right) obtained from antibody was pre-absorbed by immunogen peptide.

Note

For research use only.