

**Product Name: NVL Rabbit Polyclonal Antibody**  
**Catalog #: APRab14993**



## Summary

<b>Production Name</b>	NVL Rabbit Polyclonal Antibody
<b>Description</b>	Rabbit Polyclonal Antibody
<b>Host</b>	Rabbit
<b>Application</b>	WB,ELISA
<b>Reactivity</b>	Human,Mouse,Rat

## Performance

<b>Conjugation</b>	Unconjugated
<b>Modification</b>	Unmodified
<b>Isotype</b>	IgG
<b>Clonality</b>	Polyclonal
<b>Form</b>	Liquid
<b>Storage</b>	Store at 4°C short term. Aliquot and store at -20°C long term. Avoid freeze/thaw cycles.
<b>Buffer</b>	Liquid in PBS containing 50% glycerol, 0.5% BSA and 0.02% New type preservative N.
<b>Purification</b>	Affinity purification

## Immunogen

<b>Gene Name</b>	NVL
<b>Alternative Names</b>	NVL; Nuclear valosin-containing protein-like; NVLp; Nuclear VCP-like protein
<b>Gene ID</b>	4931.0
<b>SwissProt ID</b>	O15381. Synthesized peptide derived from NVL . at AA range: 320-400

## Application

<b>Dilution Ratio</b>	WB 1:500-1:2000, ELISA 1:20000.Not yet tested in other applications.
<b>Molecular Weight</b>	95kDa

## Background

This gene encodes a member of the AAA (ATPases associated with diverse cellular activities) superfamily. Multiple transcript variants encoding different isoforms have been found for this gene. Two encoded proteins, described as major

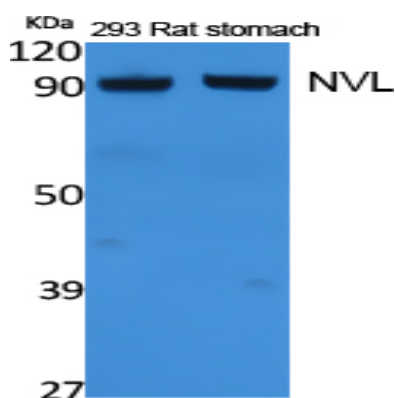
**Product Name: NVL Rabbit Polyclonal Antibody**  
**Catalog #: APRab14993**



and minor isoforms, have been localized to distinct regions of the nucleus. The largest encoded protein (major isoform) has been localized to the nucleolus and shown to participate in ribosome biosynthesis (PMID: 15469983, 16782053), while the minor isoform has been localized to the nucleoplasm. [provided by RefSeq, Aug 2011],PTM:Phosphorylated.,similarity:Belongs to the AAA ATPase family.,tissue specificity:Widely expressed. Highest level of expression in heart, placenta, skeletal muscle, pancreas and retina.,

## Research Area

## Image Data



Western Blot analysis of extracts from rat stomach, 293 cells, using NVL Polyclonal Antibody.. Secondary antibody was diluted at 1:20000 cells nucleus extracted by Minute TM Cytoplasmic and Nuclear Fractionation kit (SC-003, Invent biotech, MN, USA) .

## Note

For research use only.