

Product Name: NTT5 Rabbit Polyclonal Antibody
Catalog #: APRab14935



Summary

Production Name	NTT5 Rabbit Polyclonal Antibody
Description	Rabbit Polyclonal Antibody
Host	Rabbit
Application	IHC-P,IF-P,IF-F,ICC/IF,ELISA
Reactivity	Human,Rat,Mouse

Performance

Conjugation	Unconjugated
Modification	Unmodified
Isotype	IgG
Clonality	Polyclonal
Form	Liquid
Storage	Store at 4°C short term. Aliquot and store at -20°C long term. Avoid freeze/thaw cycles.
Buffer	Liquid in PBS containing 50% glycerol, 0.5% BSA and 0.02% New type preservative N.
Purification	Affinity purification

Immunogen

Gene Name	SLC6A16
Alternative Names	SLC6A16; NTT5; Orphan sodium- and chloride-dependent neurotransmitter transporter NTT5; Solute carrier family 6 member 16
Gene ID	28968.0
SwissProt ID	Q9GZN6. The antiserum was produced against synthesized peptide derived from human SLC6A16. AA range:233-282

Application

Dilution Ratio	IHC-P 1:100-1:300, ELISA 1:40000, IF-P/IF-F/ICC/IF 1:50-200
Molecular Weight	

Background

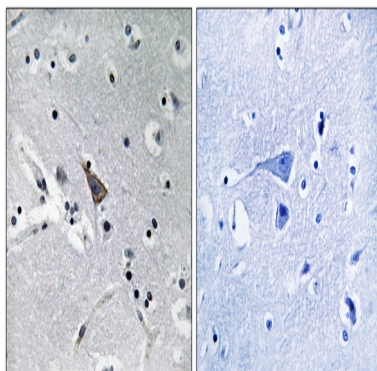
Product Name: NTT5 Rabbit Polyclonal Antibody
Catalog #: APRab14935



SLC6A16 shows structural characteristics of an Na(+)- and Cl(-)-dependent neurotransmitter transporter, including 12 transmembrane (TM) domains, intracellular N and C termini, and large extracellular loops containing multiple N-glycosylation sites.[supplied by OMIM, Mar 2008],similarity:Belongs to the sodium:neurotransmitter symporter (SNF) family.,tissue specificity:Highly expressed in peripheral tissues, particularly in testis, pancreas, and prostate.,

Research Area

Image Data



Immunohistochemistry analysis of paraffin-embedded human brain, using SLC6A16 Antibody. The picture on the right is blocked with the synthesized peptide.

Note

For research use only.