

Product Name: NTF2 Rabbit Polyclonal Antibody
Catalog #: APRab14927



Summary

Production Name	NTF2 Rabbit Polyclonal Antibody
Description	Rabbit Polyclonal Antibody
Host	Rabbit
Application	WB,IHC-P,IF-P,IF-F,ICC/IF,ELISA
Reactivity	Human,Mouse,Rat

Performance

Conjugation	Unconjugated
Modification	Unmodified
Isotype	IgG
Clonality	Polyclonal
Form	Liquid
Storage	Store at 4°C short term. Aliquot and store at -20°C long term. Avoid freeze/thaw cycles.
Buffer	Liquid in PBS containing 50% glycerol, 0.5% BSA and 0.02% New type preservative N.
Purification	Affinity purification

Immunogen

Gene Name	NUTF2
Alternative Names	NUTF2; NTF2; Nuclear transport factor 2; NTF-2; Placental protein 15; PP15
Gene ID	10204.0
SwissProt ID	P61970.The antiserum was produced against synthesized peptide derived from human NUTF2. AA range:67-116

Application

Dilution Ratio	WB 1:500-1:2000, IHC-P 1:100-1:300, ELISA 1:20000, IF-P/IF-F/ICC/IF 1:50-200
Molecular Weight	15kDa

Background

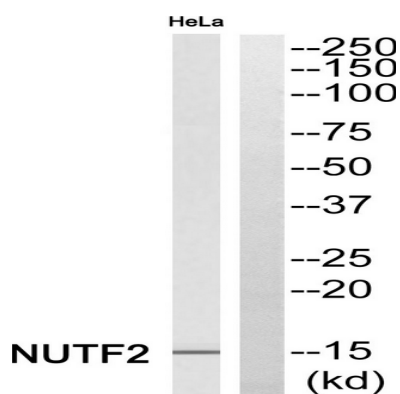
Product Name: NTF2 Rabbit Polyclonal Antibody
Catalog #: APRab14927



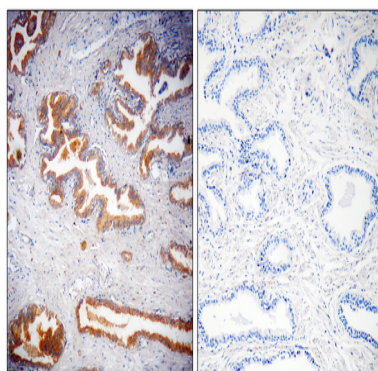
This gene encodes a cytosolic factor that facilitates protein transport into the nucleus. The encoded protein is required for nuclear import of the small Ras-like GTPase, Ran which is involved in numerous cellular processes. This protein also interacts with the nuclear pore complex glycoprotein p62. [provided by RefSeq, Apr 2016],function:Facilitates protein transport into the nucleus. Interacts with the nucleoporin p62 and with Ran. Acts at a relatively late stage of nuclear protein import, subsequent to the initial docking of nuclear import ligand at the nuclear envelope. Could be part of a multicomponent system of cytosolic factors that assemble at the pore complex during nuclear import.,similarity:Contains 1 NTF2 domain.,subunit:Homodimer.,

Research Area

Image Data

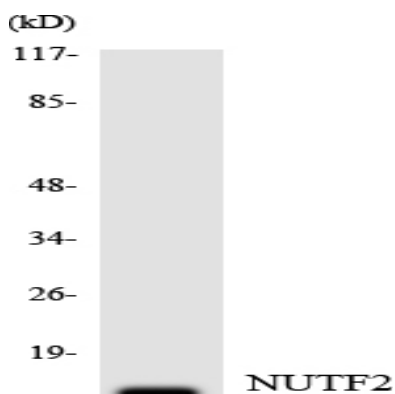


Western blot analysis of NTF2 Antibody. The lane on the right is blocked with the NTF2 peptide.

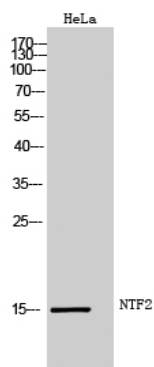


Immunohistochemistryt analysis of paraffin-embedded human prostate, using NTF2 Antibody. The lane on the right is blocked with the NTF2 peptide.

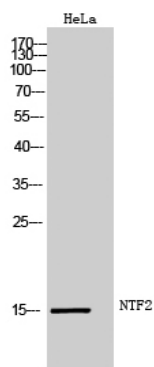
Product Name: NTF2 Rabbit Polyclonal Antibody
Catalog #: APRab14927



Western blot analysis of the lysates from HT-29 cells using NTF2 antibody.



Western Blot analysis of HeLa cells using NTF2 Polyclonal Antibody



Western Blot analysis of HeLa cells using NTF2 Polyclonal Antibody

Note

For research use only.