

## Summary

<b>Production Name</b>	NT-4 Rabbit Polyclonal Antibody
<b>Description</b>	Rabbit Polyclonal Antibody
<b>Host</b>	Rabbit
<b>Application</b>	IHC-P,IF-P,IF-F,ICC/IF,ELISA
<b>Reactivity</b>	Human,Mouse,Rat

## Performance

<b>Conjugation</b>	Unconjugated
<b>Modification</b>	Unmodified
<b>Isotype</b>	IgG
<b>Clonality</b>	Polyclonal
<b>Form</b>	Liquid
<b>Storage</b>	Store at 4°C short term. Aliquot and store at -20°C long term. Avoid freeze/thaw cycles.
<b>Buffer</b>	Liquid in PBS containing 50% glycerol, 0.5% BSA and 0.02% New type preservative N.
<b>Purification</b>	Affinity purification

## Immunogen

<b>Gene Name</b>	NTF4
<b>Alternative Names</b>	NTF4; NTF5; Neurotrophin-4; NT-4; Neurotrophin-5; NT-5; Neutrophic factor 4
<b>Gene ID</b>	4909.0
<b>SwissProt ID</b>	P34130.The antiserum was produced against synthesized peptide derived from human NT-4. AA range:71-120

## Application

<b>Dilution Ratio</b>	IHC-P 1:100-1:300, ELISA 1:10000, IF-P/IF-F/ICC/IF 1:50-200
<b>Molecular Weight</b>	

## Background

**Product Name: NT-4 Rabbit Polyclonal Antibody**  
**Catalog #: APRab14918**

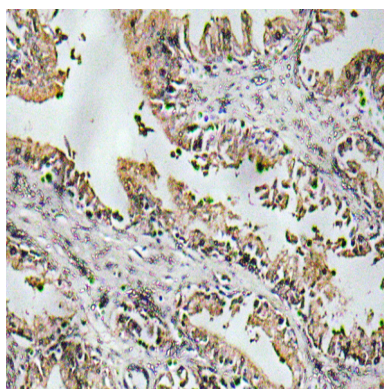


This gene is a member of a family of neurotrophic factors, neurotrophins, that control survival and differentiation of mammalian neurons. The expression of this gene is ubiquitous and less influenced by environmental signals. While knock-outs of other neurotrophins including nerve growth factor, brain-derived neurotrophic factor, and neurotrophin 3 prove lethal during early postnatal development, NTF5-deficient mice only show minor cellular deficits and develop normally to adulthood. [provided by RefSeq, Jul 2008],function:Target-derived survival factor for peripheral sensory sympathetic neurons.,similarity:Belongs to the NGF-beta family.,tissue specificity:Highest levels in prostate, lower levels in thymus, placenta, and skeletal muscle. Expressed in embryonic and adult tissues.,

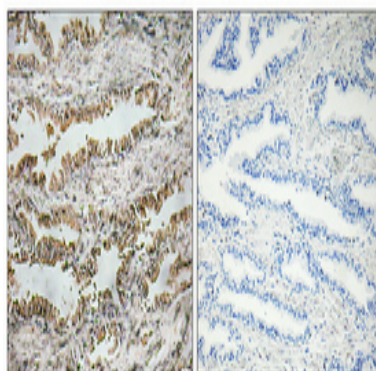
## Research Area

MAPK\_ERK\_Growth;MAPK\_G\_Protein;Neurotrophin;

## Image Data



Immunohistochemistry analysis of NT-4 antibody in paraffin-embedded human prostate carcinoma tissue.



Immunohistochemical analysis of paraffin-embedded Human prostate cancer. Antibody was diluted at 1:100 (4°,overnight) . High-pressure and temperature Tris-EDTA,pH8.0 was used for antigen retrieval. Negative control (right) obtained from antibody was pre-absorbed by immunogen peptide.

## Note

For research use only.

**Product Name: NT-4 Rabbit Polyclonal Antibody**  
**Catalog #: APRab14918**

---

