

**Product Name: NPA1 Rabbit Polyclonal Antibody**  
**Catalog #: APRab14824**



## Summary

<b>Production Name</b>	NPA1 Rabbit Polyclonal Antibody
<b>Description</b>	Rabbit Polyclonal Antibody
<b>Host</b>	Rabbit
<b>Application</b>	IHC-P,IF-P,IF-F,ICC/IF,ELISA
<b>Reactivity</b>	Human,Rat,Mouse

## Performance

<b>Conjugation</b>	Unconjugated
<b>Modification</b>	Unmodified
<b>Isotype</b>	IgG
<b>Clonality</b>	Polyclonal
<b>Form</b>	Liquid
<b>Storage</b>	Store at 4°C short term. Aliquot and store at -20°C long term. Avoid freeze/thaw cycles.
<b>Buffer</b>	Liquid in PBS containing 50% glycerol, 0.5% BSA and 0.02% New type preservative N.
<b>Purification</b>	Affinity purification

## Immunogen

<b>Gene Name</b>	URB1
<b>Alternative Names</b>	URB1; C21orf108; KIAA0539; NOP254; NPA1; Nucleolar pre-ribosomal-associated protein 1; Nucleolar protein 254 kDa; URB1 ribosome biogenesis 1 homolog
<b>Gene ID</b>	9875.0
<b>SwissProt ID</b>	O60287. The antiserum was produced against synthesized peptide derived from human URB1. AA range:2013-2062

## Application

<b>Dilution Ratio</b>	IHC-P 1:100-1:300, ELISA 1:40000, IF-P/IF-F/ICC/IF 1:50-200
<b>Molecular Weight</b>	

## Background

**Product Name: NPA1 Rabbit Polyclonal Antibody**  
**Catalog #: APRab14824**

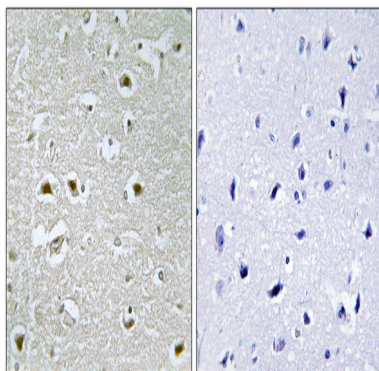
---



URB1, also named as C21orf108, KIAA0539 and NPA1, is a 2271 amino acid protein that is homologous to the *S. cerevisiae* protein URB1 which is a nucleolar protein involved in the normal accumulation of 25S and 5. S rRNAs and may also play a role in the biosynthesis of the 60S ribosomal unit. Also localized to the nucleolus, human URB1 is thought to have the same functions as *S. cerevisiae* URB1. The antibody is specific to URB1.

## Research Area

## Image Data



Immunohistochemistry analysis of paraffin-embedded human brain, using URB1 Antibody. The picture on the right is blocked with the synthesized peptide.

## Note

For research use only.