

Summary

Production Name	Nov Rabbit Polyclonal Antibody
Description	Rabbit Polyclonal Antibody
Host	Rabbit
Application	WB,IHC-P,IF-P,IF-F,ICC/IF,ELISA
Reactivity	Human,Mouse

Performance

Conjugation	Unconjugated
Modification	Unmodified
Isotype	IgG
Clonality	Polyclonal
Form	Liquid
Storage	Store at 4°C short term. Aliquot and store at -20°C long term. Avoid freeze/thaw cycles.
Buffer	Liquid in PBS containing 50% glycerol, 0.5% BSA and 0.02% New type preservative N.
Purification	Affinity purification

Immunogen

Gene Name	NOV NOV; CCN3; IGFBP9; NOVH; Protein NOV homolog; NovH; CCN family member 3;
Alternative Names	Insulin-like growth factor-binding protein 9; IBP-9; IGF-binding protein 9; IGFBP-9; Nephroblastoma-overexpressed gene protein homolog
Gene ID	4856.0
SwissProt ID	P48745.The antiserum was produced against synthesized peptide derived from the Internal region of human NOV. AA range:221-270

Application

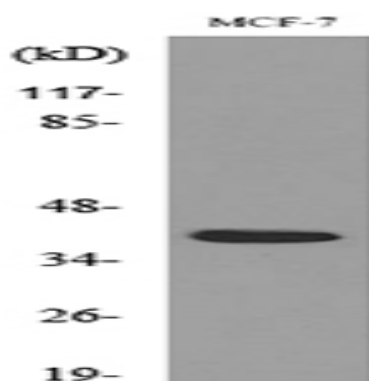
Dilution Ratio	WB 1:500-1:2000, IHC-P 1:100-1:300, ELISA 1:20000, IF-P/IF-F/ICC/IF 1:50-200
Molecular Weight	39kDa

Background

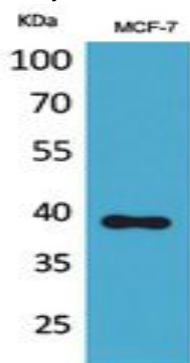
The protein encoded by this gene is a small secreted cysteine-rich protein and a member of the CCN family of regulatory proteins. CCN family proteins associate with the extracellular matrix and play an important role in cardiovascular and skeletal development, fibrosis and cancer development. [provided by RefSeq, Feb 2009],function:Immediate-early protein likely to play a role in cell growth regulation.,similarity:Belongs to the CCN family.,similarity:Contains 1 CTCK (C-terminal cystine knot-like) domain.,similarity:Contains 1 IGFBP N-terminal domain.,similarity:Contains 1 TSP type-1 domain.,similarity:Contains 1 VWFC domain.,subunit:Interacts with FBLN1.,tissue specificity:Increased expression in Wilms tumor of the stromal type.,

Research Area

Image Data

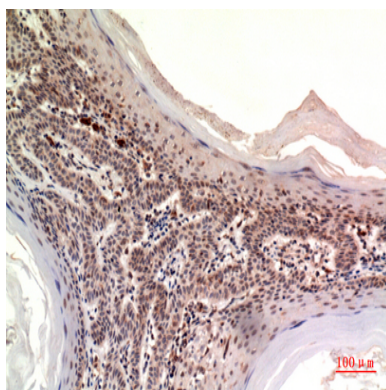


Western blot analysis of lysate from MCF-7 cells, using NOV Antibody.



Western Blot analysis of MCF-7 cells using Nov Polyclonal Antibody.. Secondary antibody was diluted at 1:20000

Product Name: Nov Rabbit Polyclonal Antibody
Catalog #: APRab14809



Immunohistochemical analysis of paraffin-embedded human-skin, antibody was diluted at 1:100

Note

For research use only.