

**Product Name: Nop132 Rabbit Polyclonal Antibody**  
**Catalog #: APRab14796**



## Summary

<b>Production Name</b>	Nop132 Rabbit Polyclonal Antibody
<b>Description</b>	Rabbit Polyclonal Antibody
<b>Host</b>	Rabbit
<b>Application</b>	WB,IHC-P,IF-P,IF-F,ICC/IF,ELISA
<b>Reactivity</b>	Human,Rat,Mouse

## Performance

<b>Conjugation</b>	Unconjugated
<b>Modification</b>	Unmodified
<b>Isotype</b>	IgG
<b>Clonality</b>	Polyclonal
<b>Form</b>	Liquid
<b>Storage</b>	Store at 4°C short term. Aliquot and store at -20°C long term. Avoid freeze/thaw cycles.
<b>Buffer</b>	Liquid in PBS containing 50% glycerol, 0.5% BSA and 0.02% New type preservative N.
<b>Purification</b>	Affinity purification

## Immunogen

<b>Gene Name</b>	NOL8
<b>Alternative Names</b>	NOL8; C9orf34; NOP132; Nucleolar protein 8; Nucleolar protein Nop132
<b>Gene ID</b>	55035.0
<b>SwissProt ID</b>	Q76FK4.The antiserum was produced against synthesized peptide derived from human NOL8. AA range:1118-1167

## Application

<b>Dilution Ratio</b>	WB 1:500-1:2000, IHC-P 1:100-1:300, ELISA 1:20000, IF-P/IF-F/ICC/IF 1:50-200
<b>Molecular Weight</b>	130kDa

## Background

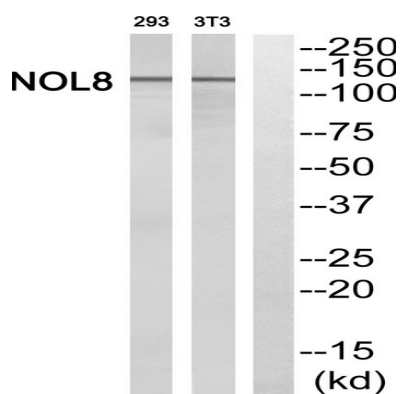
**Product Name: Nop132 Rabbit Polyclonal Antibody**  
**Catalog #: AP Rab14796**



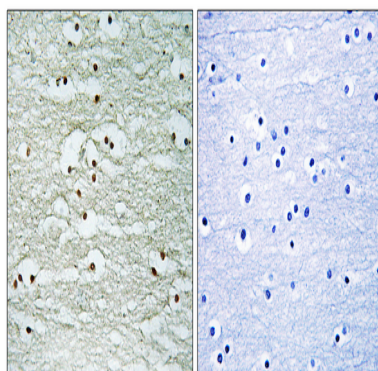
NOL8 binds Ras-related GTP-binding proteins (see MIM 608267) and plays a role in cell growth (Sekiguchi et al., 2004 [PubMed 14660641]).[supplied by OMIM, Mar 2008],function:Plays an essential role in the survival of diffuse-type gastric cancer cells. May be involved in regulation of gene expression at the post-transcriptional level or in ribosome biogenesis in cancer cells.,induction:Up-regulated in diffuse-type gastric cancers.,PTM:Phosphorylated.,similarity:Contains 1 RRM (RNA recognition motif) domain.,subunit:Interacts with the GTP form of RAGA, RAGC and RAGD. Interacts with NIP7.,tissue specificity:Expressed in various diffuse-type gastric cancers. Detected at lower levels in skeletal muscle.,

## Research Area

## Image Data

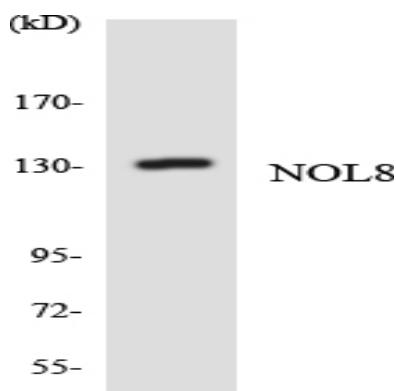


Western blot analysis of NOL8 Antibody. The lane on the right is blocked with the NOL8 peptide.

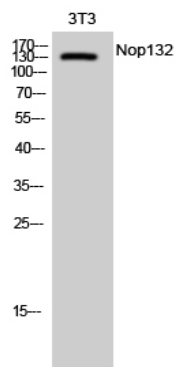


Immunohistochemistry analysis of paraffin-embedded human brain, using NOL8 Antibody. The lane on the right is blocked with the NOL8 peptide.

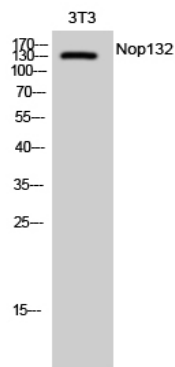
**Product Name: Nop132 Rabbit Polyclonal Antibody**  
**Catalog #: APRab14796**



Western blot analysis of the lysates from HepG2 cells using NOL8 antibody.



Western Blot analysis of 3T3 cells using Nop132 Polyclonal Antibody diluted at 1: 1000 cells nucleus extracted by Minute TM Cytoplasmic and Nuclear Fractionation kit (SC-003, Inventbiotech, MN, USA) .



Western Blot analysis of NIH-3T3 cells using Nop132 Polyclonal Antibody diluted at 1: 1000 cells nucleus extracted by Minute TM Cytoplasmic and Nuclear Fractionation kit (SC-003, Inventbiotech, MN, USA) .

## Note

For research use only.