

Product Name: Nkx-6.1 Rabbit Polyclonal Antibody
Catalog #: APRab14737



Summary

Production Name	Nkx-6.1 Rabbit Polyclonal Antibody
Description	Rabbit Polyclonal Antibody
Host	Rabbit
Application	WB,ELISA
Reactivity	Human,Mouse,Rat

Performance

Conjugation	Unconjugated
Modification	Unmodified
Isotype	IgG
Clonality	Polyclonal
Form	Liquid
Storage	Store at 4°C short term. Aliquot and store at -20°C long term. Avoid freeze/thaw cycles.
Buffer	Liquid in PBS containing 50% glycerol, 0.5% BSA and 0.02% New type preservative N.
Purification	Affinity purification

Immunogen

Gene Name	NKX6-1
Alternative Names	NKX6-1; NKX6A; Homeobox protein Nkx-6.1; Homeobox protein NK-6 homolog A
Gene ID	4825.0
SwissProt ID	P78426. Synthesized peptide derived from Nkx-6.1 . at AA range: 180-260

Application

Dilution Ratio	WB 1:500-1:2000, ELISA 1:40000.Not yet tested in other applications.
Molecular Weight	

Background

In the pancreas, NKX6.1 is required for the development of beta cells and is a potent bifunctional transcription regulator that binds to AT-rich sequences within the promoter region of target genes lype et al. (2004) [PubMed 15056733].[supplied

Product Name: Nkx-6.1 Rabbit Polyclonal Antibody
Catalog #: APRab14737

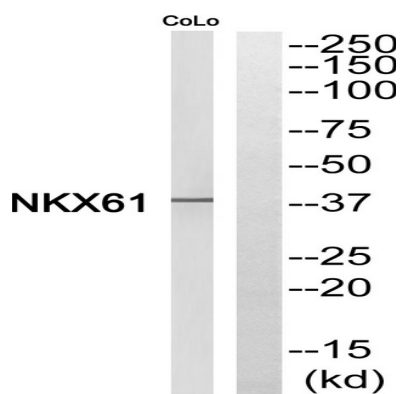


by OMIM, Mar 2008],function:May be important for control of islet development and/or regulation of insulin biosynthesis.,similarity:Contains 1 homeobox DNA-binding domain.,tissue specificity:Pancreatic beta cells.,

Research Area

Maturity onset diabetes of the young;

Image Data



Note

For research use only.