

Product Name: Nkx-2.6 Rabbit Polyclonal Antibody
Catalog #: APRab14731



Summary

Production Name	Nkx-2.6 Rabbit Polyclonal Antibody
Description	Rabbit Polyclonal Antibody
Host	Rabbit
Application	WB,ELISA
Reactivity	Human,Rat,Mouse

Performance

Conjugation	Unconjugated
Modification	Unmodified
Isotype	IgG
Clonality	Polyclonal
Form	Liquid
Storage	Store at 4°C short term. Aliquot and store at -20°C long term. Avoid freeze/thaw cycles.
Buffer	Liquid in PBS containing 50% glycerol, 0.5% BSA and 0.02% New type preservative N.
Purification	Affinity purification

Immunogen

Gene Name	NKX2-6
Alternative Names	NKX2-6; NKX2F; Homeobox protein Nkx-2.6; Homeobox protein NK-2 homolog F
Gene ID	18092.0
SwissProt ID	A6NCS4.The antiserum was produced against synthesized peptide derived from human NKX26. AA range:91-140

Application

Dilution Ratio	WB 1:500-1:2000, ELISA 1:40000.Not yet tested in other applications.
Molecular Weight	28kDa

Background

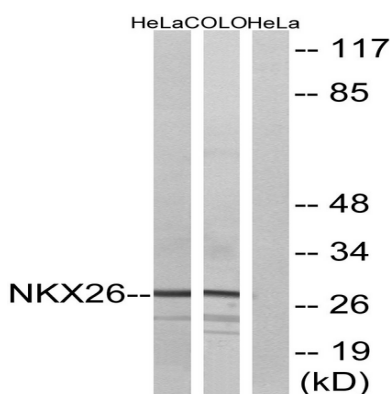
Product Name: Nkx-2.6 Rabbit Polyclonal Antibody
Catalog #: AP Rab14731



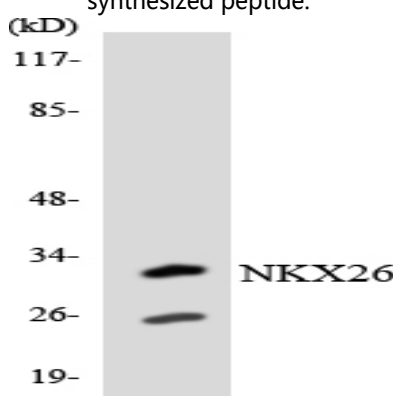
This gene encodes a homeobox-containing protein that belongs to the NK-2 homeobox family. This protein is a vertebrate homolog of *Drosophila* homeobox-containing protein called 'tinman', which has been shown to be essential for development of the heart-like dorsal vessel. In conjunction with related gene, NKX2-5, this gene may play a role in both pharyngeal and cardiac embryonic development. Mutations in this gene are associated with persistent truncus arteriosus. [provided by RefSeq, Aug 2011],

Research Area

Image Data



Western blot analysis of lysates from HeLa and COLO cells, using NKX26 Antibody. The lane on the right is blocked with the synthesized peptide.



Western blot analysis of the lysates from Jurkat cells using NKX26 antibody.

Product Name: Nkx-2.6 Rabbit Polyclonal Antibody
Catalog #: APRab14731



Western Blot analysis of various cells using Nkx-2.6 Polyclonal Antibody diluted at 1: 500

Note

For research use only.