

**Product Name: NKIAMRE Rabbit Polyclonal Antibody**  
**Catalog #: APRab14722**



## Summary

<b>Production Name</b>	NKIAMRE Rabbit Polyclonal Antibody
<b>Description</b>	Rabbit Polyclonal Antibody
<b>Host</b>	Rabbit
<b>Application</b>	IHC-P,IF-P,IF-F,ICC/IF,WB,ELISA
<b>Reactivity</b>	Human,Rat,Mouse

## Performance

<b>Conjugation</b>	Unconjugated
<b>Modification</b>	Unmodified
<b>Isotype</b>	IgG
<b>Clonality</b>	Polyclonal
<b>Form</b>	Liquid
<b>Storage</b>	Store at 4°C short term. Aliquot and store at -20°C long term. Avoid freeze/thaw cycles.
<b>Buffer</b>	Liquid in PBS containing 50% glycerol, 0.5% BSA and 0.02% New type preservative N.
<b>Purification</b>	Affinity purification

## Immunogen

<b>Gene Name</b>	CDKL3
<b>Alternative Names</b>	CDKL3; NKIAMRE; Cyclin-dependent kinase-like 3; Serine/threonine-protein kinase NKIAMRE
<b>Gene ID</b>	51265.0
<b>SwissProt ID</b>	Q81VW4. The antiserum was produced against synthesized peptide derived from human CDKL3. AA range:291-340

## Application

<b>Dilution Ratio</b>	WB 1:500-2000, IHC-P 1:100-1:300, ELISA 1:5000, IF-P/IF-F/ICC/IF 1:50-200
<b>Molecular Weight</b>	67kDa

## Background

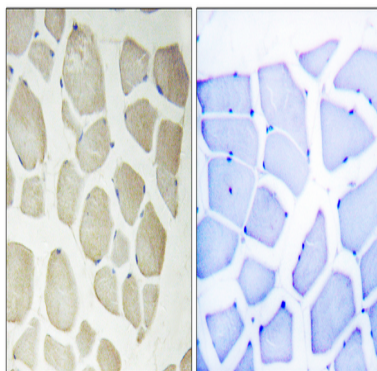
**Product Name: NKIAMRE Rabbit Polyclonal Antibody**  
**Catalog #: APRab14722**



The protein encoded by this gene is a member of cyclin-dependent protein kinase (CDK) family. CDK family members are highly similar to the gene products of *Saccharomyces cerevisiae* cdc28, and *Schizosaccharomyces pombe* cdc2, and are known to be important regulators of cell cycle progression. This gene was identified as a gene absent in leukemic patients with chromosome 5q deletion. This loss may be an important determinant of dysmyelopoiesis. Alternative splicing results in multiple transcript variants encoding different isoforms. [provided by RefSeq, Jul 2008], catalytic activity: ATP + a protein = ADP + a phosphoprotein., domain: The [NKR]KIAxRE motif seems to be a cyclin-binding region., similarity: Belongs to the protein kinase superfamily. CMGC Ser/Thr protein kinase family. CDC2/CDKX subfamily., similarity: Contains 1 protein kinase domain.,

## Research Area

## Image Data



Immunohistochemistry analysis of paraffin-embedded human skeletal muscle, using CDKL3 Antibody. The picture on the right is blocked with the synthesized peptide.

## Note

For research use only.