

Product Name: NIM1 Rabbit Polyclonal Antibody
Catalog #: AP Rab14702



Summary

Production Name	NIM1 Rabbit Polyclonal Antibody
Description	Rabbit Polyclonal Antibody
Host	Rabbit
Application	WB,ELISA
Reactivity	Human,Mouse

Performance

Conjugation	Unconjugated
Modification	Unmodified
Isotype	IgG
Clonality	Polyclonal
Form	Liquid
Storage	Store at 4°C short term. Aliquot and store at -20°C long term. Avoid freeze/thaw cycles.
Buffer	Liquid in PBS containing 50% glycerol, 0.5% BSA and 0.02% New type preservative N.
Purification	Affinity purification

Immunogen

Gene Name	NIM1
Alternative Names	NIM1; Serine/threonine-protein kinase NIM1
Gene ID	167359.0
SwissProt ID	Q8IY84. The antiserum was produced against synthesized peptide derived from human NIM1. AA range:347-396

Application

Dilution Ratio	WB 1:500-1:2000, ELISA 1:10000. Not yet tested in other applications.
Molecular Weight	

Background

catalytic activity:ATP + a protein = ADP + a phosphoprotein., cofactor:Magnesium., enzyme regulation:Activated by

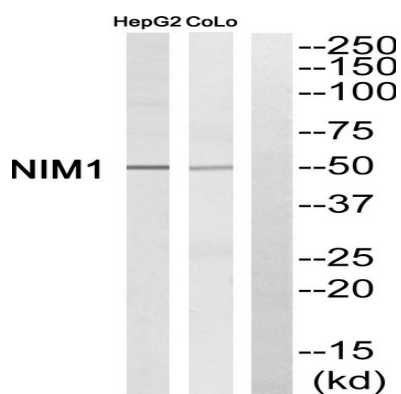
Product Name: NIM1 Rabbit Polyclonal Antibody
Catalog #: AP Rab14702



phosphorylation at Thr-229, probably by autophosphorylation.,similarity:Belongs to the protein kinase superfamily. CAMK Ser/Thr protein kinase family.,similarity:Contains 1 protein kinase domain.,catalytic activity:ATP + a protein = ADP + a phosphoprotein.,cofactor:Magnesium.,enzyme regulation:Activated by phosphorylation at Thr-229, probably by autophosphorylation.,similarity:Belongs to the protein kinase superfamily. CAMK Ser/Thr protein kinase family.,similarity:Contains 1 protein kinase domain.,

Research Area

Image Data



Western blot analysis of NIM1 Antibody. The lane on the right is blocked with the NIM1 peptide.

Note

For research use only.