

Product Name: Nidogen Rabbit Polyclonal Antibody
Catalog #: APRab14698



Summary

Production Name	Nidogen Rabbit Polyclonal Antibody
Description	Rabbit Polyclonal Antibody
Host	Rabbit
Application	WB,ELISA
Reactivity	Human,Mouse,Rat

Performance

Conjugation	Unconjugated
Modification	Unmodified
Isotype	IgG
Clonality	Polyclonal
Form	Liquid
Storage	Store at 4°C short term. Aliquot and store at -20°C long term. Avoid freeze/thaw cycles.
Buffer	Liquid in PBS containing 50% glycerol, 0.5% BSA and 0.02% New type preservative N.
Purification	Affinity purification

Immunogen

Gene Name	NID1
Alternative Names	NID1; NID; Nidogen-1; NID-1; Entactin
Gene ID	4811.0
SwissProt ID	P14543. The antiserum was produced against synthesized peptide derived from human NID1. AA range:219-268

Application

Dilution Ratio	WB 1:500-1:2000, ELISA 1:20000.Not yet tested in other applications.
Molecular Weight	136kDa

Background

nidogen 1(NID1) Homo sapiens This gene encodes a member of the nidogen family of basement membrane

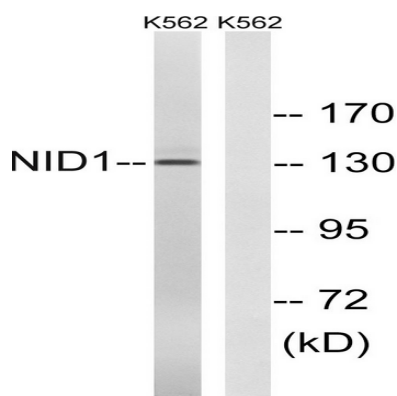
Product Name: Nidogen Rabbit Polyclonal Antibody
Catalog #: APRab14698



glycoproteins. The protein interacts with several other components of basement membranes, and may play a role in cell interactions with the extracellular matrix. [provided by RefSeq, Jul 2008],function:Sulfated glycoprotein widely distributed in basement membranes and tightly associated with laminin. Also binds to collagen IV and perlecan. It probably has a role in cell-extracellular matrix interactions.,PTM:N- and O-glycosylated.,similarity:Contains 1 NIDO domain.,similarity:Contains 1 nidogen G2 beta-barrel domain.,similarity:Contains 1 thyroglobulin type-1 domain.,similarity:Contains 4 LDL-receptor class B repeats.,similarity:Contains 6 EGF-like domains.,subunit:Interacts with FBLN1 and LGALS3BP.,

Research Area

Image Data



Western blot analysis of lysates from K562 cells, using NID1 Antibody. The lane on the right is blocked with the synthesized peptide.

Note

For research use only.