

Product Name: NICE4 Rabbit Polyclonal Antibody
Catalog #: APRab14695



Summary

| | |
|------------------------|----------------------------------|
| Production Name | NICE4 Rabbit Polyclonal Antibody |
| Description | Rabbit Polyclonal Antibody |
| Host | Rabbit |
| Application | WB,ELISA |
| Reactivity | Human,Mouse |

Performance

| | |
|---------------------|--|
| Conjugation | Unconjugated |
| Modification | Unmodified |
| Isotype | IgG |
| Clonality | Polyclonal |
| Form | Liquid |
| Storage | Store at 4°C short term. Aliquot and store at -20°C long term. Avoid freeze/thaw cycles. |
| Buffer | Liquid in PBS containing 50% glycerol, 0.5% BSA and 0.02% New type preservative N. |
| Purification | Affinity purification |

Immunogen

| | |
|--------------------------|---|
| Gene Name | UBAP2L |
| Alternative Names | UBAP2L; KIAA0144; NICE4; Ubiquitin-associated protein 2-like; Protein NICE-4 |
| Gene ID | 9898.0 |
| SwissProt ID | Q14157.The antiserum was produced against synthesized peptide derived from human UBAP2L. AA range:561-610 |

Application

| | |
|-------------------------|--|
| Dilution Ratio | WB 1:500-1:2000, ELISA 1:20000.Not yet tested in other applications. |
| Molecular Weight | 115kDa |

Background

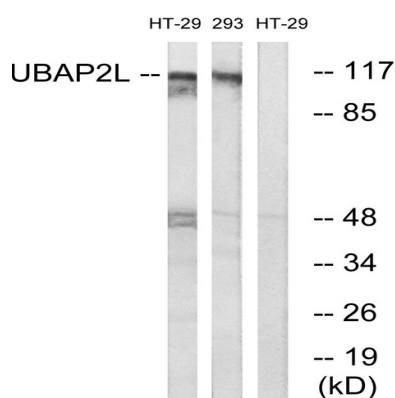
Product Name: NICE4 Rabbit Polyclonal Antibody
Catalog #: AP Rab14695



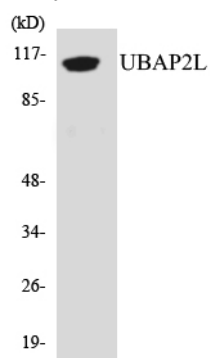
PTM:Phosphorylated upon DNA damage, probably by ATM or ATR.,similarity:Contains 1 UBA domain.,tissue specificity:Ubiquitous.,PTM:Phosphorylated upon DNA damage, probably by ATM or ATR.,similarity:Contains 1 UBA domain.,tissue specificity:Ubiquitous.,

Research Area

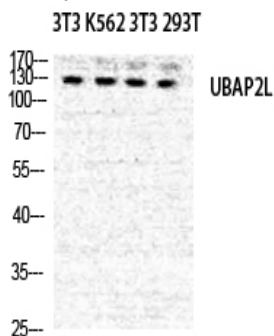
Image Data



Western blot analysis of lysates from HT-29 and 293 cells, using UBAP2L Antibody. The lane on the right is blocked with the synthesized peptide.



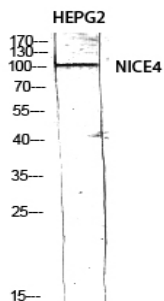
Western blot analysis of the lysates from Jurkat cells using UBAP2L antibody.



Product Name: NICE4 Rabbit Polyclonal Antibody
Catalog #: APRab14695



Western Blot analysis of NIH-3T3 K562 NIH-3T3 293T cells using NICE4 Polyclonal Antibody diluted at 1: 500



Western Blot analysis of HEPG2 using NICE4 Polyclonal Antibody diluted at 1: 500

Note

For research use only.