

**Product Name: Nicalin Rabbit Polyclonal Antibody**  
**Catalog #: AP Rab14693**



## Summary

<b>Production Name</b>	Nicalin Rabbit Polyclonal Antibody
<b>Description</b>	Rabbit Polyclonal Antibody
<b>Host</b>	Rabbit
<b>Application</b>	WB, IHC-P, IF-P, IF-F, ICC/IF, ELISA
<b>Reactivity</b>	Human, Mouse, Rat

## Performance

<b>Conjugation</b>	Unconjugated
<b>Modification</b>	Unmodified
<b>Isotype</b>	IgG
<b>Clonality</b>	Polyclonal
<b>Form</b>	Liquid
<b>Storage</b>	Store at 4°C short term. Aliquot and store at -20°C long term. Avoid freeze/thaw cycles.
<b>Buffer</b>	Liquid in PBS containing 50% glycerol, 0.5% BSA and 0.02% New type preservative N.
<b>Purification</b>	Affinity purification

## Immunogen

<b>Gene Name</b>	NCLN
<b>Alternative Names</b>	NCLN; Nicalin; Nicastrin-like protein
<b>Gene ID</b>	56926.0
<b>SwissProt ID</b>	Q969V3. The antiserum was produced against synthesized peptide derived from human NCLN. AA range: 474-523

## Application

<b>Dilution Ratio</b>	WB 1:500-1:2000, IHC-P 1:100-1:300, ELISA 1:40000, IF-P/IF-F/ICC/IF 1:50-200
<b>Molecular Weight</b>	63kDa

## Background

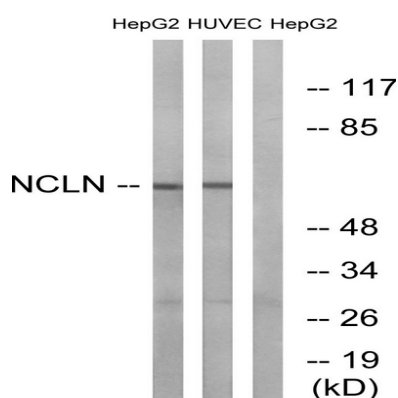
**Product Name: Nicalin Rabbit Polyclonal Antibody**  
**Catalog #: APRab14693**



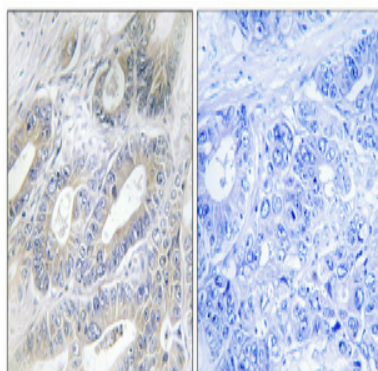
function: May antagonize Nodal signaling and subsequent organization of axial structures during mesodermal patterning., similarity: Belongs to the nicastrin family., subunit: Interacts with NOMO2. Due to the strong similarity between NOMO1, NOMO2 and NOMO3, it probably also interacts with NOMO1 and NOMO3. Participates in a large protein complex, which is not related to the gamma-secretase complex., tissue specificity: Highly expressed in pancreas and skeletal muscle and, at lower levels, in heart., function: May antagonize Nodal signaling and subsequent organization of axial structures during mesodermal patterning., similarity: Belongs to the nicastrin family., subunit: Interacts with NOMO2. Due to the strong similarity between NOMO1, NOMO2 and NOMO3, it probably also interacts with NOMO1 and NOMO3. Participates in a large protein complex, which is not related to the gamma-secretase complex., tissue specificity: Highly expressed in pancreas and skeletal muscle and, at lower levels, in heart.,

## Research Area

## Image Data



Western blot analysis of lysates from HepG2 and HUVEC cells, using NCLN Antibody. The lane on the right is blocked with the synthesized peptide.



Immunohistochemical analysis of paraffin-embedded Human colon cancer. Antibody was diluted at 1:100 (4°, overnight). High-pressure and temperature Tris-EDTA, pH 8.0 was used for antigen retrieval. Negative control (right) obtained from antibody was pre-absorbed by immunogen peptide.

**Product Name: Nicalin Rabbit Polyclonal Antibody**  
**Catalog #: APRab14693**

---



**Note**

For research use only.