

Product Name: NHE-9 Rabbit Polyclonal Antibody
Catalog #: APRab14688



Summary

Production Name	NHE-9 Rabbit Polyclonal Antibody
Description	Rabbit Polyclonal Antibody
Host	Rabbit
Application	WB,ELISA
Reactivity	Human,Mouse

Performance

Conjugation	Unconjugated
Modification	Unmodified
Isotype	IgG
Clonality	Polyclonal
Form	Liquid
Storage	Store at 4°C short term. Aliquot and store at -20°C long term. Avoid freeze/thaw cycles.
Buffer	Liquid in PBS containing 50% glycerol, 0.5% BSA and 0.02% New type preservative N.
Purification	Affinity purification

Immunogen

Gene Name	SLC9A9
Alternative Names	SLC9A9; NHE9; Nbla00118; Sodium/hydrogen exchanger 9; Na(+)/H(+) exchanger 9; NHE-9; Solute carrier family 9 member 9
Gene ID	285195.0
SwissProt ID	Q8IVB4.The antiserum was produced against synthesized peptide derived from human SLC9A9. AA range:171-220

Application

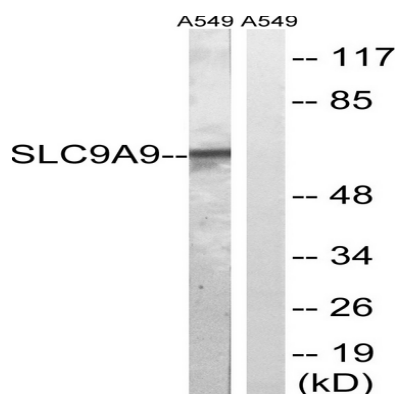
Dilution Ratio	WB 1:500-1:2000, ELISA 1:40000.Not yet tested in other applications.
Molecular Weight	65kDa

Background

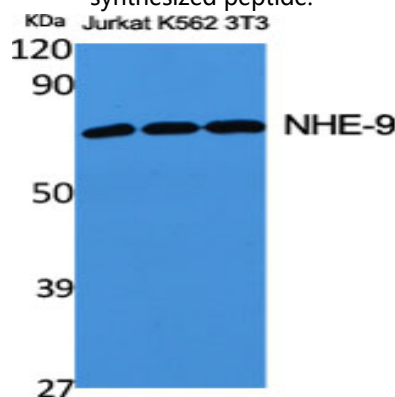
This gene encodes a sodium/proton exchanger that is a member of the solute carrier 9 protein family. The encoded protein localizes to the late recycling endosomes and may play an important role in maintaining cation homeostasis. Mutations in this gene are associated with autism susceptibility 16 and attention-deficit/hyperactivity disorder. [provided by RefSeq, Mar 2012], disease: A chromosomal aberration involving SLC9A9 may be a cause of early-onset behavioral/developmental disorder with features of attention deficit-hyperactivity disorder and intellectual disability (ADHD) [MIM:143465]. Inversion inv(3)(p14;q21). The inversion disrupts SLC9A9 and DOCK3., function: May act in electroneutral exchange of protons for Na(+) across membranes. Involved in the effusion of Golgi luminal H(+) in exchange for cytosolic cations. Involved in organelle ion homeostasis by contributing to the maintenance of the unique acidic pH values of the Golgi and post-Golgi compartments in the cell., similarity: Belongs to the monovalent cation:proton antiporter 1 (CPA1) transporter (TC 2.A.36) family., tissue specificity: Ubiquitously expressed in all tissues tested. Expressed at highest levels in heart and skeletal muscle, followed by placenta, kidney, and liver. Expressed in the brain, in the medulla and spinal cord.,

Research Area

Image Data



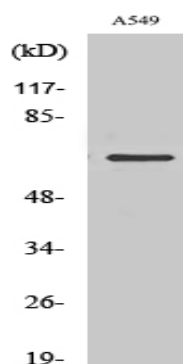
Western blot analysis of lysates from A549 cells, using SLC9A9 Antibody. The lane on the right is blocked with the synthesized peptide.



Product Name: NHE-9 Rabbit Polyclonal Antibody
Catalog #: APRab14688



Western Blot analysis of various cells using NHE-9 Polyclonal Antibody



Western Blot analysis of RAW264.7 cells using NHE-9 Polyclonal Antibody

Note

For research use only.