

## Summary

<b>Production Name</b>	NGEP Rabbit Polyclonal Antibody
<b>Description</b>	Rabbit Polyclonal Antibody
<b>Host</b>	Rabbit
<b>Application</b>	WB,IHC-P,IF-P,IF-F,ICC/IF,ELISA
<b>Reactivity</b>	Human,Rat,Mouse

## Performance

<b>Conjugation</b>	Unconjugated
<b>Modification</b>	Unmodified
<b>Isotype</b>	IgG
<b>Clonality</b>	Polyclonal
<b>Form</b>	Liquid
<b>Storage</b>	Store at 4°C short term. Aliquot and store at -20°C long term. Avoid freeze/thaw cycles.
<b>Buffer</b>	Liquid in PBS containing 50% glycerol, 0.5% BSA and 0.02% New type preservative N.
<b>Purification</b>	Affinity purification

## Immunogen

<b>Gene Name</b>	ANO7 ANO7; NGEP; PCANAP5; TMEM16G; Anoctamin-7; Dresden transmembrane protein of the prostate; D-TMPP; IPCA-5; New gene expressed in prostate; Prostate cancer-associated protein 5; Transmembrane protein 16G
<b>Alternative Names</b>	
<b>Gene ID</b>	50636.0
<b>SwissProt ID</b>	Q6IWH7.The antiserum was produced against synthesized peptide derived from human TM16G. AA range:881-930

## Application

<b>Dilution Ratio</b>	WB 1:500-1:2000, IHC-P 1:100-1:300, IF-P/IF-F/ICC/IF 1:200-1:1000, ELISA 1:20000.Not yet tested in other applications.
-----------------------	--

**Product Name: NGEP Rabbit Polyclonal Antibody**  
**Catalog #: APRab14675**



---

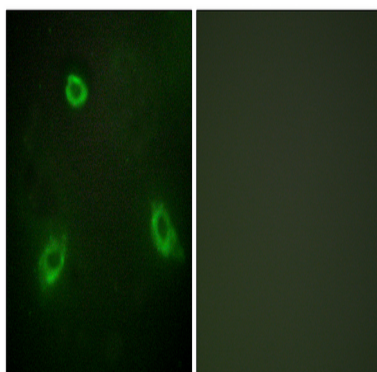
**Molecular Weight**      105kDa

## Background

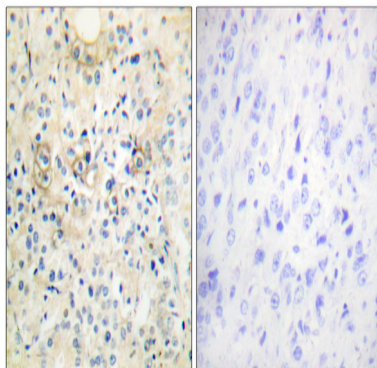
This prostate-specific gene encodes a cytoplasmic protein, as well as a polytopic membrane protein which may serve as a target in prostate cancer diagnosis and immunotherapy. Alternative splicing results in multiple transcript variants encoding different isoforms. [provided by RefSeq, Aug 2011],caution:It is uncertain whether Met-1 or Met-55 is the initiator.,function:May act as a calcium-activated chloride channel. May play a role in cell-cell interactions.,induction:Up-regulated by androgen.,similarity:Belongs to the anoctamin family.,subcellular location:Concentrates at sites of cell-cell contact.,tissue specificity:Specifically expressed in epithelial cells of the prostate (at protein level),

## Research Area

## Image Data



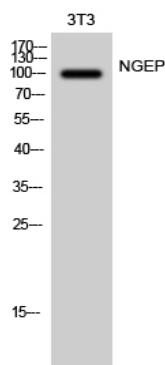
Immunofluorescence analysis of HepG2 cells, using TM16G Antibody. The picture on the right is blocked with the synthesized peptide.



Immunohistochemistry analysis of paraffin-embedded human prostate carcinoma tissue, using TM16G Antibody. The picture on the right is blocked with the synthesized peptide.

**Product Name: NGEP Rabbit Polyclonal Antibody**  
**Catalog #: APRab14675**

---



Western Blot analysis of 3T3 cells using NGEP Polyclonal Antibody diluted at 1: 1000

### **Note**

For research use only.