

Product Name: NFE2 Rabbit Polyclonal Antibody
Catalog #: APRab14646



Summary

| | |
|------------------------|---------------------------------|
| Production Name | NFE2 Rabbit Polyclonal Antibody |
| Description | Rabbit Polyclonal Antibody |
| Host | Rabbit |
| Application | WB,ELISA |
| Reactivity | Human,Mouse,Rat |

Performance

| | |
|---------------------|--|
| Conjugation | Unconjugated |
| Modification | Unmodified |
| Isotype | IgG |
| Clonality | Polyclonal |
| Form | Liquid |
| Storage | Store at 4°C short term. Aliquot and store at -20°C long term. Avoid freeze/thaw cycles. |
| Buffer | Liquid in PBS containing 50% glycerol, and 0.02% New type preservative N. |
| Purification | Affinity purification |

Immunogen

| | |
|--------------------------|---|
| Gene Name | NFE2 |
| Alternative Names | |
| Gene ID | 4778.0 |
| SwissProt ID | Q16621. Synthesized peptide derived from part region of human protein |

Application

| | |
|-------------------------|-----------------------------------|
| Dilution Ratio | WB 1:500-2000, ELISA 1:5000-20000 |
| Molecular Weight | 41kDa |

Background

function:Required for activity at the locus control region (LCR) upstream of the globin gene complexes. Requires p18 NF-E2 for binding to the NF-E2 motif. May play a role in all aspects of hemoglobin production: globin synthesis, heme synthesis,

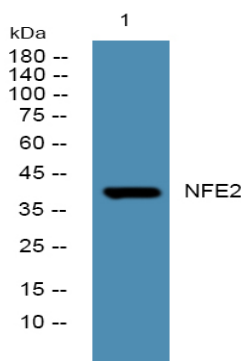
Product Name: NFE2 Rabbit Polyclonal Antibody
Catalog #: AP Rab14646



and the procurement of iron.,similarity:Belongs to the bZIP family.,similarity:Belongs to the bZIP family. CNC subfamily.,similarity:Contains 1 bZIP domain.,subunit:Interacts with MLL2; leading to activate transcription of the beta-globin locus (By similarity). Heterodimer of p45 NF-E2 and p18 NF-E2. Forms high affinity heterodimer with MAFG; the interaction promotes erythropoiesis.,tissue specificity:Expressed in hematopoietic cells and also in colon and testis.,function:Required for activity at the locus control region (LCR) upstream of the globin gene complexes. Requires p18 NF-E2 for binding to the NF-E2 motif. May play a role in all aspects of hemoglobin production: globin synthesis, heme synthesis, and the procurement of iron.,similarity:Belongs to the bZIP family.,similarity:Belongs to the bZIP family. CNC subfamily.,similarity:Contains 1 bZIP domain.,subunit:Interacts with MLL2; leading to activate transcription of the beta-globin locus (By similarity). Heterodimer of p45 NF-E2 and p18 NF-E2. Forms high affinity heterodimer with MAFG; the interaction promotes erythropoiesis.,tissue specificity:Expressed in hematopoietic cells and also in colon and testis.,

Research Area

Image Data



Western blot analysis of lysates from U2OS cells, primary antibody was diluted at 1:1000, 4°over night

Note

For research use only.