

Product Name: Neurotensin Rabbit Polyclonal Antibody
Catalog #: APRab14624



Summary

Production Name	Neurotensin Rabbit Polyclonal Antibody
Description	Rabbit Polyclonal Antibody
Host	Rabbit
Application	WB,ELISA
Reactivity	Human,Mouse,Rat

Performance

Conjugation	Unconjugated
Modification	Unmodified
Isotype	IgG
Clonality	Polyclonal
Form	Liquid
Storage	Store at 4°C short term. Aliquot and store at -20°C long term. Avoid freeze/thaw cycles.
Buffer	Liquid in PBS containing 50% glycerol, 0.5% BSA and 0.02% New type preservative N.
Purification	Affinity purification

Immunogen

Gene Name	NTS
Alternative Names	NTS; Neurotensin/neuromedin N
Gene ID	4922.0
SwissProt ID	P30990. The antiserum was produced against synthesized peptide derived from the C-terminal region of human NTS. AA range:121-170

Application

Dilution Ratio	WB 1:500-1:2000, ELISA 1:20000. Not yet tested in other applications.
Molecular Weight	20kDa

Background

This gene encodes a common precursor for two peptides, neuromedin N and neurotensin. Neurotensin is a secreted

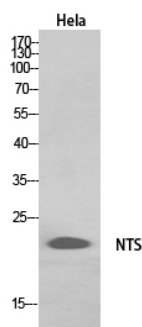
Product Name: Neurotensin Rabbit Polyclonal Antibody
Catalog #: AP Rab14624



tridecapeptide, which is widely distributed throughout the central nervous system, and may function as a neurotransmitter or a neuromodulator. It may be involved in dopamine-associated pathophysiological events, in the maintenance of gut structure and function, and in the regulation of fat metabolism. Neurotensin also exhibits antimicrobial activity against bacteria and fungi. Tissue-specific processing may lead to the formation in some tissues of larger forms of neuromedin N and neurotensin. The large forms may represent more stable peptides that are also biologically active. [provided by RefSeq, Oct 2014],function:Neurotensin may play an endocrine or paracrine role in the regulation of fat metabolism. It causes contraction of smooth muscle.,online information:Neurotensin entry,similarity:Belongs to the neurotensin family.,subcellular location:Packaged within secretory vesicles.,

Research Area

Image Data



Western Blot analysis of HeLa, HepG2 cells using Neurotensin Polyclonal Antibody.. Secondary antibody was diluted at 1:20000

Note

For research use only.