

Product Name: Neuralized-2 Rabbit Polyclonal Antibody
Catalog #: AP Rab14591



Summary

Production Name	Neuralized-2 Rabbit Polyclonal Antibody
Description	Rabbit Polyclonal Antibody
Host	Rabbit
Application	WB, IHC-P, IF-P, IF-F, ICC/IF, ELISA
Reactivity	Human, Mouse

Performance

Conjugation	Unconjugated
Modification	Unmodified
Isotype	IgG
Clonality	Polyclonal
Form	Liquid
Storage	Store at 4°C short term. Aliquot and store at -20°C long term. Avoid freeze/thaw cycles.
Buffer	Liquid in PBS containing 50% glycerol, 0.5% BSA and 0.02% New type preservative N.
Purification	Affinity purification

Immunogen

Gene Name	NEURL2
Alternative Names	NEURL2; C20orf163; Neuralized-like protein 2
Gene ID	140825.0
SwissProt ID	Q9BR09. The antiserum was produced against synthesized peptide derived from human NEURL2. AA range: 99-148

Application

Dilution Ratio	WB 1:500-1:2000, IHC-P 1:100-1:300, ELISA 1:40000, IF-P/IF-F/ICC/IF 1:50-200
Molecular Weight	36kDa

Background

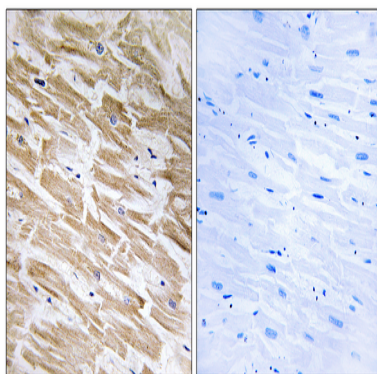
Product Name: Neuralized-2 Rabbit Polyclonal Antibody
Catalog #: APRab14591



This gene encodes a protein that is involved in the regulation of myofibril organization. This protein is likely the adaptor component of the E3 ubiquitin ligase complex in striated muscle, and it regulates the ubiquitin-mediated degradation of beta-catenin during myogenesis. Alternative splicing of this gene results in multiple transcript variants. [provided by RefSeq, Jun 2013],domain:The SOCS domain mediates the interaction with TCEB1 and TCEB2, while the NHR domain may be involved in ubiquitination substrate binding.,function:Plays an important role in the process of myofiber differentiation and maturation. Probable substrate-recognition component of a SCF-like ECS (Elongin BC-CUL2/5-SOCS-box protein) E3 ubiquitin-protein ligase complex, which mediates the ubiquitination of proteins. Probably contributes to catalysis through recognition and positioning of the substrate and the ubiquitin-conjugating enzyme. During myogenesis, controls the ubiquitination and degradation of the specific pool of CTNNB1/beta-catenin located at the sarcolemma.,pathway:Protein modification; protein ubiquitination.,similarity:Contains 1 NHR (neuralized homology repeat) domain.,similarity:Contains 1 SOCS box domain.,subunit:Probable component the ECS(NEURL2) E3 ubiquitin-protein ligase complex consisting of TCEB2/Elongin B, TCEB1/Elongin C, CUL5, RBX1 and NEURL2. Interacts with CTNNB1.,tissue specificity:Expressed specifically in skeletal and cardiac muscles.,

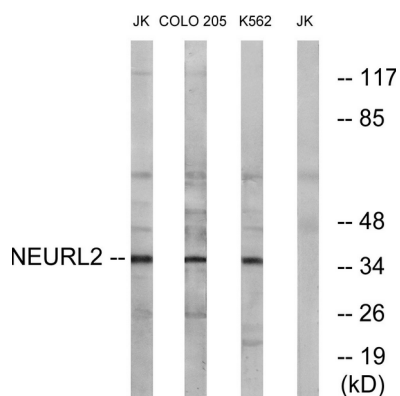
Research Area

Image Data

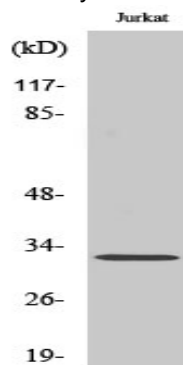


Immunohistochemistry analysis of paraffin-embedded human heart tissue, using NEURL2 Antibody. The picture on the right is blocked with the synthesized peptide.

Product Name: Neuralized-2 Rabbit Polyclonal Antibody
Catalog #: APRab14591



Western blot analysis of lysates from Jurkat, COLO, and K562 cells, using NEURL2 Antibody. The lane on the right is blocked with the synthesized peptide.



Western Blot analysis of various cells using Neuralized-2 Polyclonal Antibody

Note

For research use only.