

## Summary

<b>Production Name</b>	Nesprin-3 Rabbit Polyclonal Antibody
<b>Description</b>	Rabbit Polyclonal Antibody
<b>Host</b>	Rabbit
<b>Application</b>	WB,IF-P,IF-F,ICC/IF,ELISA
<b>Reactivity</b>	Human,Mouse

## Performance

<b>Conjugation</b>	Unconjugated
<b>Modification</b>	Unmodified
<b>Isotype</b>	IgG
<b>Clonality</b>	Polyclonal
<b>Form</b>	Liquid
<b>Storage</b>	Store at 4°C short term. Aliquot and store at -20°C long term. Avoid freeze/thaw cycles.
<b>Buffer</b>	Liquid in PBS containing 50% glycerol, 0.5% BSA and 0.02% New type preservative N.
<b>Purification</b>	Affinity purification

## Immunogen

<b>Gene Name</b>	SYNE3
<b>Alternative Names</b>	SYNE3; C14orf49; Nesprin-3; Nuclear envelope spectrin repeat protein 3
<b>Gene ID</b>	161176.0
<b>SwissProt ID</b>	Q6ZMZ3.The antiserum was produced against synthesized peptide derived from human C14orf49. AA range:169-218

## Application

<b>Dilution Ratio</b>	WB 1:500-1:2000, IF-P/IF-F/ICC/IF 1:200-1:1000, ELISA 1:40000.Not yet tested in other applications.
<b>Molecular Weight</b>	115kDa

**Product Name: Nesprin-3 Rabbit Polyclonal Antibody**  
**Catalog #: AP Rab14569**

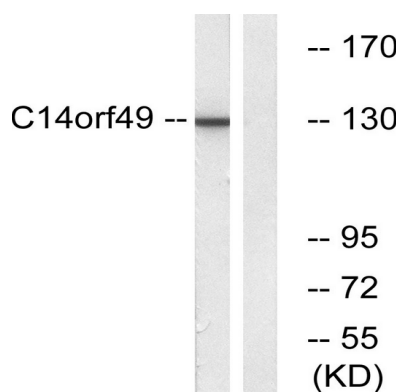


## Background

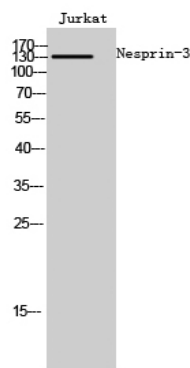
function:Involved in the maintenance of nuclear organization and structural integrity. Probable anchoring protein which theters the nucleus to the cytoskeleton by binding PLEC1/Plectin which can associate with the intermediate filament system.,similarity:Belongs to the nesprin family.,similarity:Contains 1 KASH domain.,similarity:Contains 2 spectrin repeats.,subcellular location:Located at the rough reticulum endoplasmic (RER) in some cells.,subunit:Interacts with actin-binding domain of PLEC1/plectin.,function:Involved in the maintenance of nuclear organization and structural integrity. Probable anchoring protein which theters the nucleus to the cytoskeleton by binding PLEC1/Plectin which can associate with the intermediate filament system.,similarity:Belongs to the nesprin family.,similarity:Contains 1 KASH domain.,similarity:Contains 2 spectrin repeats.,subcellular location:Located at the rough reticulum endoplasmic (RER) in some cells.,subunit:Interacts with actin-binding domain of PLEC1/plectin.,

## Research Area

## Image Data



Western blot analysis of lysates from Jurkat cells, using C14orf49 Antibody. The lane on the right is blocked with the synthesized peptide.



Western Blot analysis of Jurkat cells using Nesprin-3 Polyclonal Antibody cells nucleus extracted by Minute TM Cytoplasmic and Nuclear Fractionation kit (SC-003, Invent biotech, MN, USA) .

**Product Name: Nesprin-3 Rabbit Polyclonal Antibody**  
**Catalog #: APRab14569**

---



**Note**

For research use only.