

Product Name: Nek7 Rabbit Polyclonal Antibody
Catalog #: APRab14558



Summary

Production Name	Nek7 Rabbit Polyclonal Antibody
Description	Rabbit Polyclonal Antibody
Host	Rabbit
Application	WB,IHC-P,IF-P,IF-F,ICC/IF,ELISA
Reactivity	Human,Mouse

Performance

Conjugation	Unconjugated
Modification	Unmodified
Isotype	IgG
Clonality	Polyclonal
Form	Liquid
Storage	Store at 4°C short term. Aliquot and store at -20°C long term. Avoid freeze/thaw cycles.
Buffer	Liquid in PBS containing 50% glycerol, 0.5% BSA and 0.02% New type preservative N.
Purification	Affinity purification

Immunogen

Gene Name	NEK7
Alternative Names	NEK7; Serine/threonine-protein kinase Nek7; Never in mitosis A-related kinase 7; NimA-related protein kinase 7
Gene ID	140609.0
SwissProt ID	Q8TDX7.The antiserum was produced against synthesized peptide derived from human NEK7. AA range:101-150

Application

Dilution Ratio	WB 1:500-1:2000, IHC-P 1:100-1:300, ELISA 1:40000, IF-P/IF-F/ICC/IF 1:50-200
Molecular Weight	35kDa

Product Name: Nek7 Rabbit Polyclonal Antibody
Catalog #: AP Rab14558

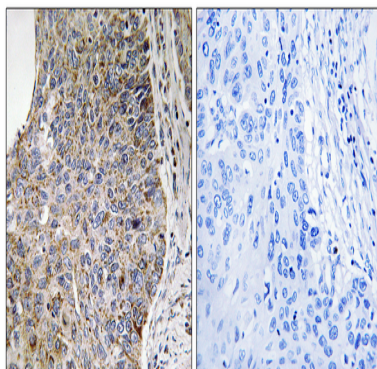


Background

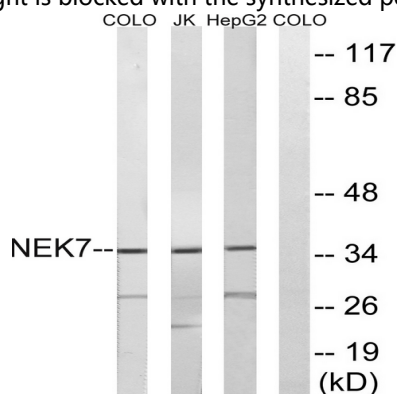
NIMA-related kinases share high amino acid sequence identity with the gene product of the *Aspergillus nidulans* 'never in mitosis A' gene, which controls initiation of mitosis.[supplied by OMIM, Jul 2002],catalytic activity:ATP + a protein = ADP + a phosphoprotein.,cofactor:Magnesium.,similarity:Belongs to the protein kinase superfamily.,similarity:Belongs to the protein kinase superfamily. NEK Ser/Thr protein kinase family. NIMA subfamily.,similarity:Contains 1 protein kinase domain.,tissue specificity:Highly expressed in lung, muscle, testis, brain, heart, liver, leukocyte and spleen. Lower expression in ovary, prostate and kidney. No expression seen in small intestine.,

Research Area

Image Data



Immunohistochemistry analysis of paraffin-embedded human lung carcinoma tissue, using NEK7 Antibody. The picture on the right is blocked with the synthesized peptide.



Western blot analysis of lysates from HepG2, Jurkat, and COLO cells, using NEK7 Antibody. The lane on the right is blocked with the synthesized peptide.

Note

For research use only.

Product Name: Nek7 Rabbit Polyclonal Antibody
Catalog #: APRab14558

