

## Summary

<b>Production Name</b>	NEIL3 Rabbit Polyclonal Antibody
<b>Description</b>	Rabbit Polyclonal Antibody
<b>Host</b>	Rabbit
<b>Application</b>	WB,IHC-P,IF-P,IF-F,ICC/IF,ELISA
<b>Reactivity</b>	Human,Mouse

## Performance

<b>Conjugation</b>	Unconjugated
<b>Modification</b>	Unmodified
<b>Isotype</b>	IgG
<b>Clonality</b>	Polyclonal
<b>Form</b>	Liquid
<b>Storage</b>	Store at 4°C short term. Aliquot and store at -20°C long term. Avoid freeze/thaw cycles.
<b>Buffer</b>	Liquid in PBS containing 50% glycerol, 0.5% BSA and 0.02% New type preservative N.
<b>Purification</b>	Affinity purification

## Immunogen

<b>Gene Name</b>	NEIL3
<b>Alternative Names</b>	NEIL3; Endonuclease 8-like 3; DNA glycosylase FPG2; DNA glycosylase/AP lyase Neil3; Endonuclease VIII-like 3; Nei-like protein 3
<b>Gene ID</b>	55247.0
<b>SwissProt ID</b>	Q8TAT5.The antiserum was produced against synthesized peptide derived from human NEIL3. AA range:491-540

## Application

<b>Dilution Ratio</b>	WB 1:500-1:2000, IHC-P 1:100-1:300, ELISA 1:40000, IF-P/IF-F/ICC/IF 1:50-200
<b>Molecular Weight</b>	35kDa

**Product Name: NEIL3 Rabbit Polyclonal Antibody**  
**Catalog #: AP Rab14547**



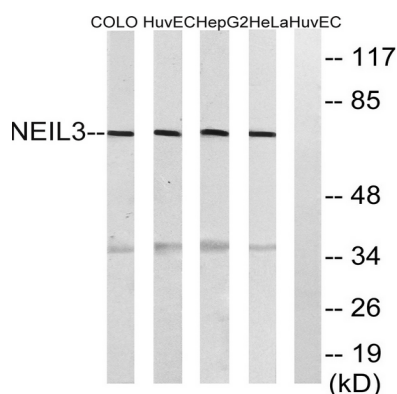
## Background

NEIL3 belongs to a class of DNA glycosylases homologous to the bacterial Fpg/Nei family. These glycosylases initiate the first step in base excision repair by cleaving bases damaged by reactive oxygen species and introducing a DNA strand break via the associated lyase reaction (Bandaru et al., 2002 [PubMed 12509226]). [supplied by OMIM, Mar 2008], function: Reports about DNA glycosylase activity are contradictory. The protein lacks a proline residue at the N-terminus that is the active site residue found in the other members of the FPG family., similarity: Belongs to the FPG family., similarity: Contains 1 FPG-type zinc finger., similarity: Contains 1 RanBP2-type zinc finger., tissue specificity: Detected in thymus and testis.,

## Research Area

Base excision repair;

## Image Data



Western blot analysis of lysates from HeLa, HepG2, HUVEC, and COLO cells, using NEIL3 Antibody. The lane on the right is blocked with the synthesized peptide.



Western Blot analysis of various cells using NEIL3 Polyclonal Antibody diluted at 1: 2000 cells nucleus extracted by Minute TM Cytoplasmic and Nuclear Fractionation kit (SC-003, Invent biotech, MN, USA) .

**Product Name: NEIL3 Rabbit Polyclonal Antibody**  
**Catalog #: APRab14547**

---



**Note**

For research use only.