

**Product Name: Nectin 3 Rabbit Polyclonal Antibody**  
**Catalog #: APRab14532**



## Summary

|                        |                                     |
|------------------------|-------------------------------------|
| <b>Production Name</b> | Nectin 3 Rabbit Polyclonal Antibody |
| <b>Description</b>     | Rabbit Polyclonal Antibody          |
| <b>Host</b>            | Rabbit                              |
| <b>Application</b>     | WB,ELISA                            |
| <b>Reactivity</b>      | Human,Mouse                         |

## Performance

|                     |  |
|---------------------|--|
| <b>Conjugation</b>  | Unconjugated   |
| <b>Modification</b> | Unmodified   |
| <b>Isotype</b>      | IgG  |
| <b>Clonality</b>    | Polyclonal   |
| <b>Form</b>         | Liquid   |
| <b>Storage</b>      | Store at 4°C short term. Aliquot and store at -20°C long term. Avoid freeze/thaw cycles. |
| <b>Buffer</b>       | Liquid in PBS containing 50% glycerol, 0.5% BSA and 0.02% New type preservative N.       |
| <b>Purification</b> | Affinity purification  |

## Immunogen

|                          |  |
|--------------------------|--|
| <b>Gene Name</b>         | PVRL3  |
| <b>Alternative Names</b> | PVRL3; PRR3; Poliovirus receptor-related protein 3; CDw113; Nectin-3; CD antigen CD113                   |
| <b>Gene ID</b>           | 25945.0  |
| <b>SwissProt ID</b>      | Q9NQS3.The antiserum was produced against synthesized peptide derived from human PVRL3. AA range:184-233 |

## Application

|                         |   |
|-------------------------|---|
| <b>Dilution Ratio</b>   | WB 1:500-1:2000, ELISA 1:5000.Not yet tested in other applications. |
| <b>Molecular Weight</b> | 61kDa   |

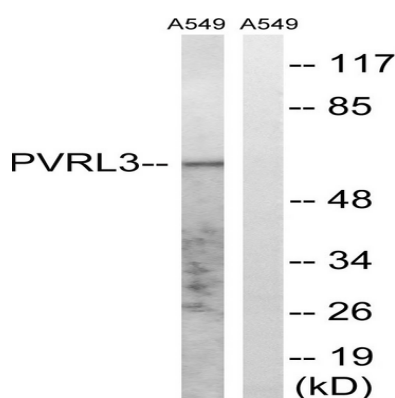
## Background

This gene encodes a member of the nectin family of proteins, which function as adhesion molecules at adherens junctions. This family member interacts with other nectin-like proteins and with afadin, a filamentous actin-binding protein involved in the regulation of directional motility, cell proliferation and survival. This gene plays a role in ocular development involving the ciliary body. Mutations in this gene are believed to result in congenital ocular defects. Alternative splicing results in multiple transcript variants. [provided by RefSeq, Aug 2011],function:Plays a role in cell-cell adhesion through heterophilic trans-interactions with nectin-like proteins or nectins, such as trans-interaction with PVRL2/nectin-2 at Sertoli-spermatid junctions. Trans-interaction with PVR induces activation of CDC42 and RAC small G proteins through common signaling molecules such as SRC and RAP1. Also involved in the formation of cell-cell junctions, including adherens junctions and synapses. Induces endocytosis-mediated down-regulation of PVR from the cell surface, resulting in reduction of cell movement and proliferation. Plays a role in the morphology of the ciliary body.,similarity:Belongs to the nectin family.,similarity:Contains 1 Ig-like V-type (immunoglobulin-like) domain.,similarity:Contains 2 Ig-like C2-type (immunoglobulin-like) domains.,subunit:Cis- and trans-homodimer. Can form trans-heterodimers with PVRL1/nectin-1, PVRL2/nectin-2, PVR, IGSF4B/Necl-1 and with IGSF4. Interacts with MLLT4/afadin. Binds with low affinity to TIGIT.,tissue specificity:Predominantly expressed in testis and placenta as well as in many cell lines, including epithelial cell lines.,

## Research Area

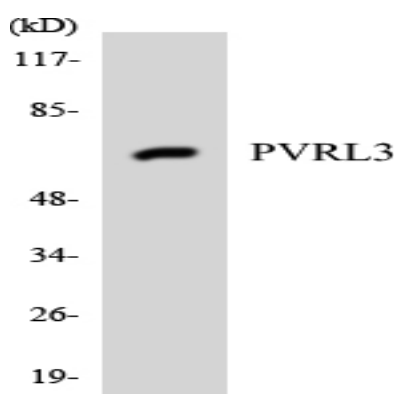
Cell adhesion molecules (CAMs);Adherens\_Junction;

## Image Data

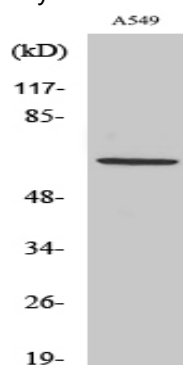


Western blot analysis of lysates from A549 cells, using PVRL3 Antibody. The lane on the right is blocked with the synthesized peptide.

**Product Name: Nectin 3 Rabbit Polyclonal Antibody**  
**Catalog #: APRab14532**



Western blot analysis of the lysates from HUVEC cells using PVRL3 antibody.



Western Blot analysis of various cells using Nectin 3 Polyclonal Antibody

## **Note**

For research use only.